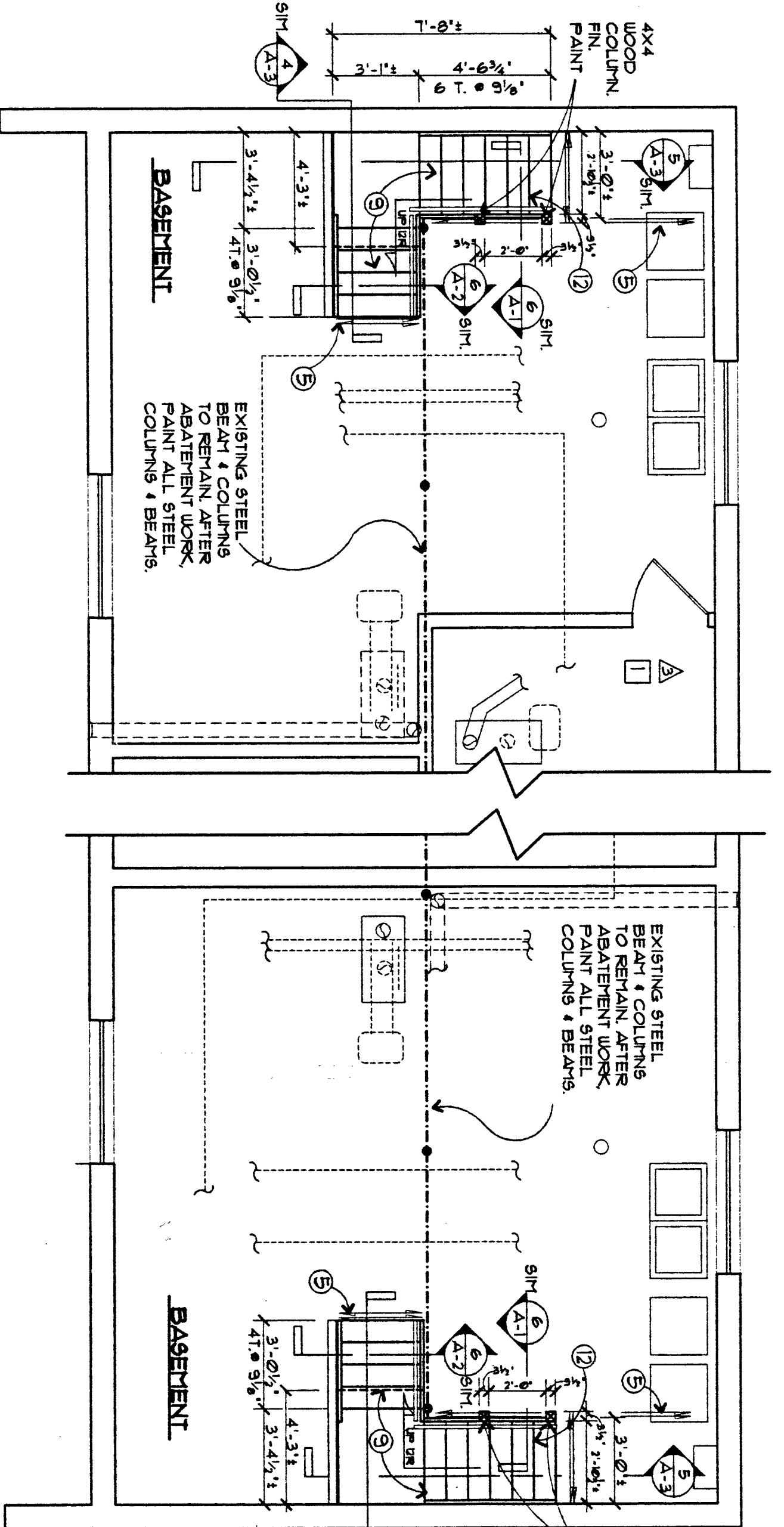


1 APT. TYPE 'C': LBP ABATEMENT & GENERAL DEMOLITION PLAN AT BASEMENT LEVEL
SCALE: 1/4" = 1'-0"

3 APT. TYPE 'C' FIRST FLOOR ACCESS & CONTAINMENT PLAN
SCALE: 1/4" = 1'-0"



2 APT. TYPE 'C': NEW CONSTRUCTION AT BASEMENT
SCALE: 1/4" = 1'-0"

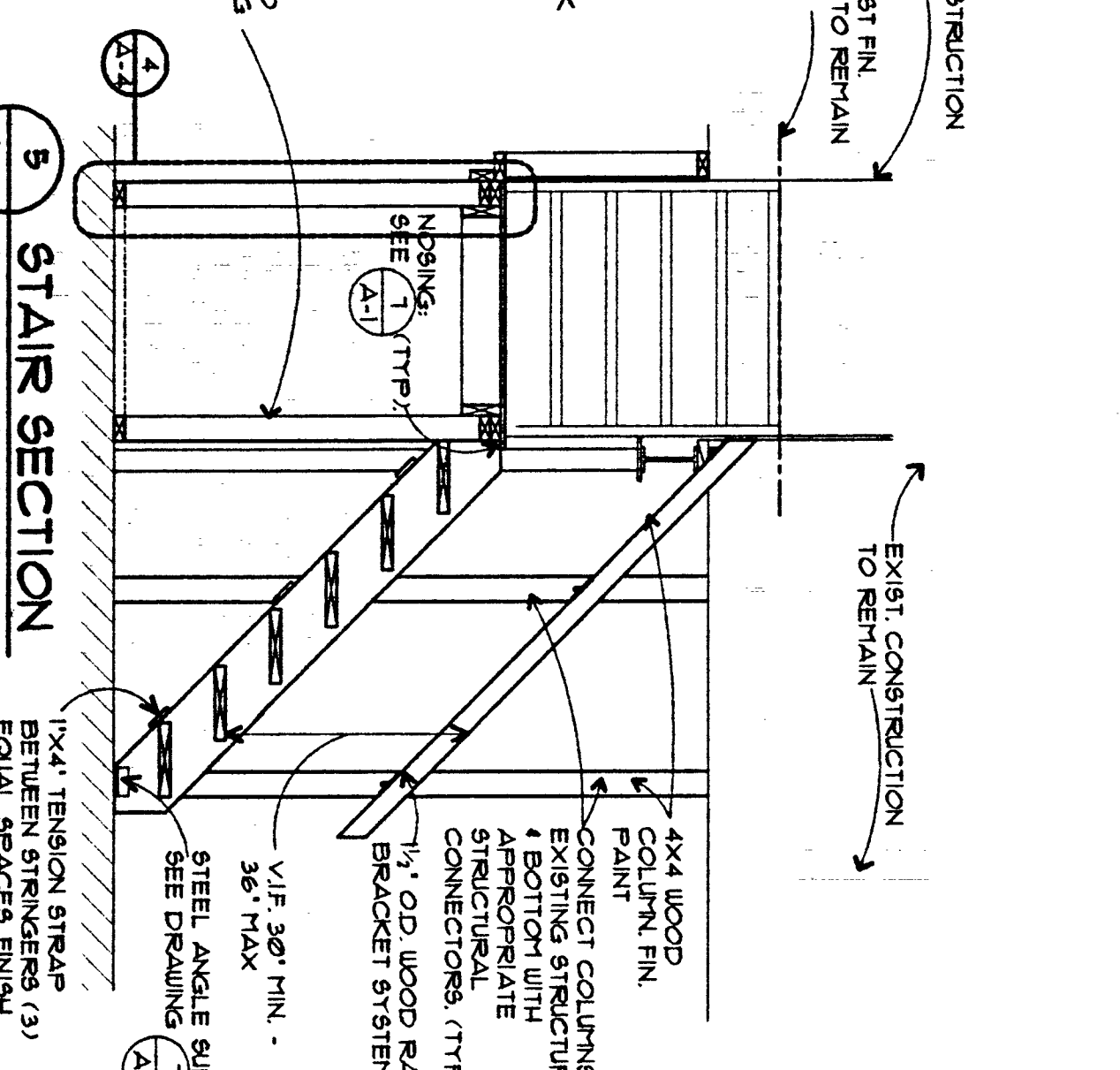
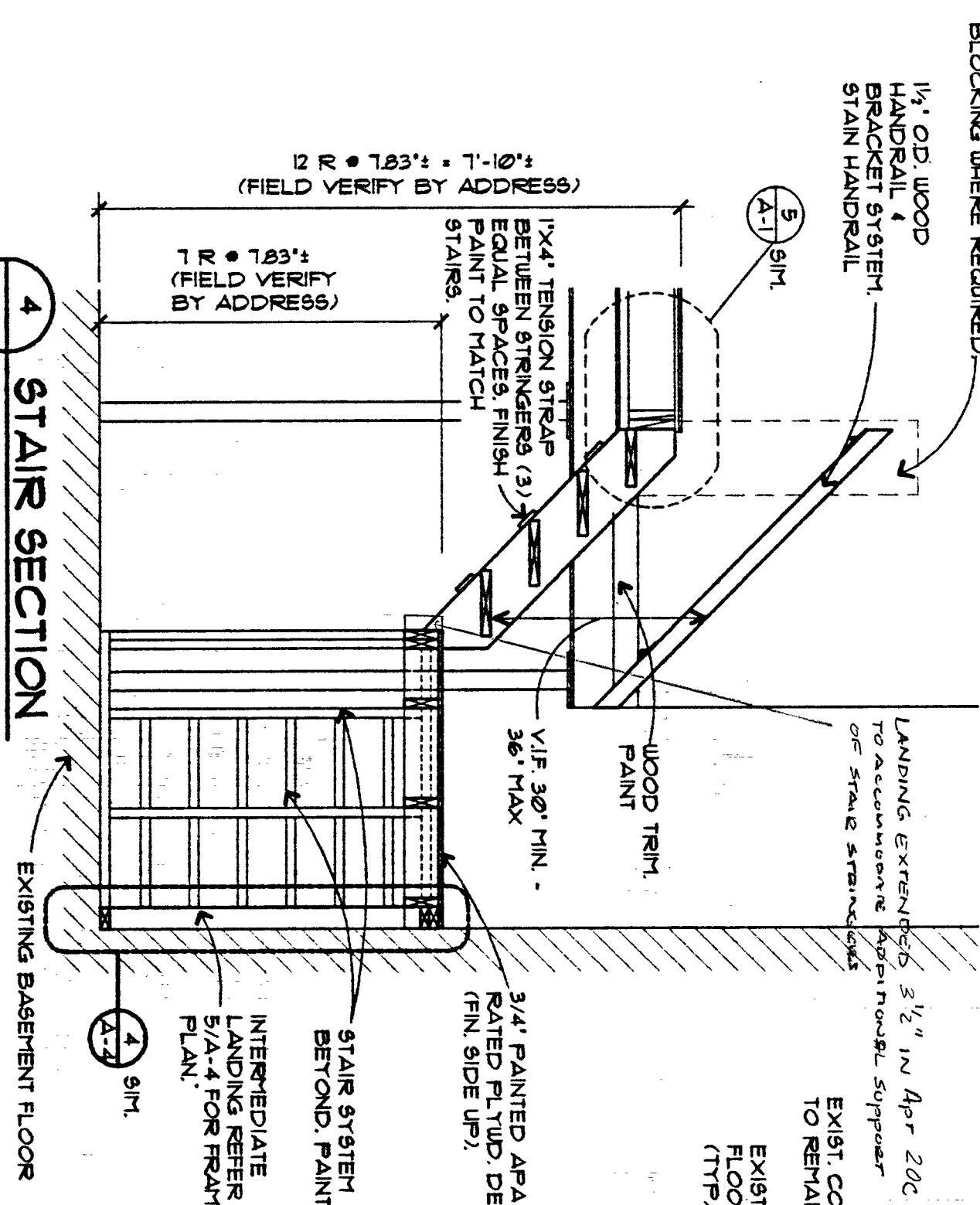
GENERAL NOTES: INDICATED AS (X) ON PLANS

- CONTRACTOR SHALL FINISH FLOOR DRAINAGE AND STAIR RISERS FROM THE EXISTING FINISH FLOOR TO THE NEW FINISH FLOOR AND PROVIDE SLOPE TO THE DRAINAGE AND STAIR RISERS. VERIFY ACTUAL LOCATION AND QUANTITY OF DRAINAGE AND STAIR RISERS TO A PRE-CONTRACT CONDITION BY THE RESPONSIBLE CONTRACTOR.
- EXISTING ELEVATED COPPER SANITARY WASTE PIPING, EXACT LOCATION VARIES BY ADDRESS. FIELD VERIFY ACTUAL LOCATION.
- EXISTING BOILER PACKAGE, VENTING SYSTEM, AND OVERHEAD EXPANSION TANK FIELD VERIFY ACTUAL CONDITIONS. BOILER PACKAGE LIMITS ACCESS TO STRUCTURAL STEEL (TYP).
- EXISTING RAIL HEAT LINE, LOCATION AND QUANTITY VARY BY ADDRESS. FIELD VERIFY ACTUAL LOCATION AND QUANTITY.
- EXISTING DOUBLE JOIST FLOOR OPERATING FRAMING TO REMAIN. FIELD VERIFY ACTUAL LOCATION, SIZE, AND DIMENSIONS.

APPROX. LOCATION OF FIN WALL REMOVAL, REFER TO SHEET A-3 FOR BLOCKING WHERE REQUIRED.

1/4" OD WOOD COLUMN FIN PAINT.

EXISTING STEEL BEAMS TO REMAIN AFTER PAINTING. STEEL COLUMNS & BEAMS.



LEAD BASED PAINT (LBP) ABATEMENT NOTES:
INDICATED AS (X) ON PLANS

- CONTRACTOR & MILL, POLY FOOT PAINT FROM WORK AREA TO DUMPSTER & POLY DUMPSTERS TO PREVENT CONTAMINATION OF NON-ABATEMENT AREAS OF BUILDING INTERIOR & EXTERIOR. CLEAN & DISPOSE OF POLY FOOT PAINT ON FINAL DAY OF ABATEMENT.
- BASEMENT STAIRS COATED WITH LEAD BASED PAINT IN 53 UNITS. DISTURBANCE SHALL BE TO CONCRETE BASEMENT.
- STRUCTURAL BEAM & SUPPORT COLUMNS ARE COATED WITH LBP IN ALL UNITS. NEGATIVE AIR TO BE EXHAUSTED TO BUILDING EXTERIOR REMOVE PAINT FROM STEEL BEAM & SUPPORT COLUMNS.
- TOP STAIR RISER IS COATED WITH LBP IN 53 UNITS. REMOVE PAINT TO WOOD SUBSTRATE.
- IN UNIT 208, RED LEAD-BASED PRIMER WAS APPLIED TO COPPER PIPE. INCLUDE ABATEMENT OF THIS COMPONENT IN STRUCTURAL BEAM CONTAINMENT.

GENERAL LBP ABATEMENT NOTES:
INDICATED AS (X) ON PLANS

- IN OCCUPIED UNITS RESIDENT'S PROPERTY MAY BE IN AREA CARE MUST BE TAKEN TO PROTECT RESIDENT'S PROPERTY.
- CONTRACTOR SHALL BE RESPONSIBLE FOR CREATING A CONTAINMENT THROUGH FIRST FLOOR.
- REMOVE LEAD BASED PAINT FROM EXPOSED STRUCTURAL STEEL WITHIN MECHANICAL ROOM. SEE NOTE (X) THIS SHEET.
- PROVIDE LOCAL HEPA FILTRATION ON ALL POWER TOOLS AND USE WET METHODS FOR DUST CONTROL. CLEAN WORK AREA.
- ACCESS TO BASEMENT WORK AREA SHALL BE LIMITED TO ABATEMENT WORKERS & AUTHORIZED REPRESENTATIVES OF THE NIAGARA FALLS HOUSING AUTHORITY. ABATEMENT CONTRACTOR TO CHANGE LOCK SET ON BASEMENT DOOR TO ALLOW RESTRICTED ACCESS TO BASEMENT. HANG PRIVACY DOOR TO AIR LOCK ON BASEMENT DOOR FRAME TO REMAIN IN PLACE UNTIL CLEANANCE IS COMPLETED. ORIGINAL LOCK SET SHALL BE REINSTALLED IN ORIGINAL CONDITION AT CONCLUSION OF NEW STAIR FINISH.

GENERAL DEMOLITION

- GENERAL DEMOLITION NOTES: INDICATED AS (X) ON PLANS**
- WHERE MECHANICAL OR PLUMBING SYSTEMS EQUIPMENT OR APPLIANCES ARE IN DIRECT CONTACT WITH ABATEMENT SURFACES, CONTRACTOR SHALL REMOVE LEAD BASED PAINT TO LIMITS OF CONTACT AREAS. CONTRACTOR SHALL NOT BE REQUIRED TO REMOVE LEAD FROM MECHANICAL EQUIPMENT OR APPLIANCES UNLESS REQUIRED TO START OF LBP ABATEMENT AND STAIR REPLACEMENT WORK. RESTORE ALL WORKING AFTER COMPLETION OF LBP ABATEMENT AND STAIR REPLACEMENT WORK.
 - EXTRACT FOR RE-USE EXISTING MECHANICAL PLUMBING FASTENER MIN TEMP. RELOCATION OF PIPING AS REQUIRED. RESTORE FASTENER AND SUPPORT CONDITION TO PRE-CONTRACT CONDITION AFTER COMPLETION OF LBP ABATEMENT AND STAIR REPLACEMENT. FIELD VERIFY LOCATION AND QUANTITY BY ADDRESS.
 - REMOVE STAIR AND HANDRAIL SYSTEM COMPLETE INCLUDING 4x4 RAIL SUPPORT COLUMNS AND WOOD STAIR PARTITIONS FROM BASEMENT LEVELING AND SHEATHING ON OPEN SIDE OF EXISTING HALF LANDING.
 - WHERE APARTMENT ADDRESSES CONTAIN ALTERNATE BOILER PACKAGE LOCATION AND ALL OTHER APPLIANCES MAY LIMIT ACCESS TO STRUCTURAL STEEL LBP ABATEMENT WORK. THIS LOCATION BY ALL LOCATIONS BY ADDRESS WHERE SANITARY WASTE PIPING ENCOUNTERS ACCESS TO STRUCTURAL STEEL (WITHIN 1/2' OF STRUCTURAL STEEL). SEE NOTE (X) THIS SHEET.
 - BOILER SUPPLY OR SPACE HEATING PIPING MAY ENCOUNTER ACCESS TO ABATEMENT SURFACES. SEE NOTE (X) THIS SHEET.
 - BOILER EXHAUST MAY ENCOUNTER ACCESS TO ABATEMENT SURFACES. SEE NOTE (X) THIS SHEET.
 - BOILER EXPANSION TANK ENCOUNTERS ACCESS TO ABATEMENT SURFACES. SEE NOTE (X) THIS SHEET.
 - DOMESTIC HOT AND COLD WATER PIPING SUPPORTED BY AND ENCOUNTERS ACCESS TO TOP OF ABATEMENT SURFACES. SEE NOTE (X) THIS SHEET.
 - SHUTTER TO NOTE #1 ABOVE, DOMESTIC HOT AND COLD WATER PIPING NOT FASTENED IN VICINITY OF BEAM. PIPING CAN BE TEMP. DISPLACED BY HAND DURING LBP ABATEMENT AND NEW FINISH ACTIVITIES.
 - AT ALL STAIR STAIR WALL, LANDING AND HANDRAIL REMOVALS, CONTRACTOR TO REMOVE EXISTING 4x4 WOOD COLUMN SUPPORTING DOUBLE JOIST FLOOR OPERATING FRAMING ABOVE AS PART OF STAIR DEMOLITION. PROVIDE ADJUSTABLE 3" STEEL LALLY COLUMN AS NEEDED. FASTENED TO FLOOR AND STRUCTURE ABOVE AS PART OF TEMPORARY SHORING DURING ABATEMENT & STAIR REPLACEMENT ACTIVITIES. INSTALL AND DEMOLITION OR DISAPPEARMENT OF EXISTING CONSTRUCTION.
 - FRESH AIR INTAKE PIPING MAY ENCOUNTER ACCESS TO ABATEMENT SURFACES. SEE NOTE (X) THIS SHEET.
 - WHERE LEAD BASED PAINT IS REMOVED FROM STRUCTURAL STEEL, MECHANICAL ROOMS OR APPLIANCES ENCOUNTER ACCESS TO ABATEMENT SURFACES. CONTRACTOR TO FIELD VERIFY ACTUAL CONDITIONS.

Architecture Unlimited
Phone: 716.692.1944
1300 Orange Street
Niagara Falls, New York 14202

Project: LEAD BASED PAINT ABATEMENT AND BASEMENT STAIR REPLACEMENT AT JORDAN GARDENS DEVELOPMENT NIAGARA FALLS HOUSING AUTHORITY NIAGARA FALLS, NEW YORK

Drawing Title: APARTMENT TYPE C PLANS AND DETAILS

Sheet: A-3

REGISTERED ARCHITECT
STATE OF NEW YORK
No. 00252

Project No. 00-001
Date: 01/09/01