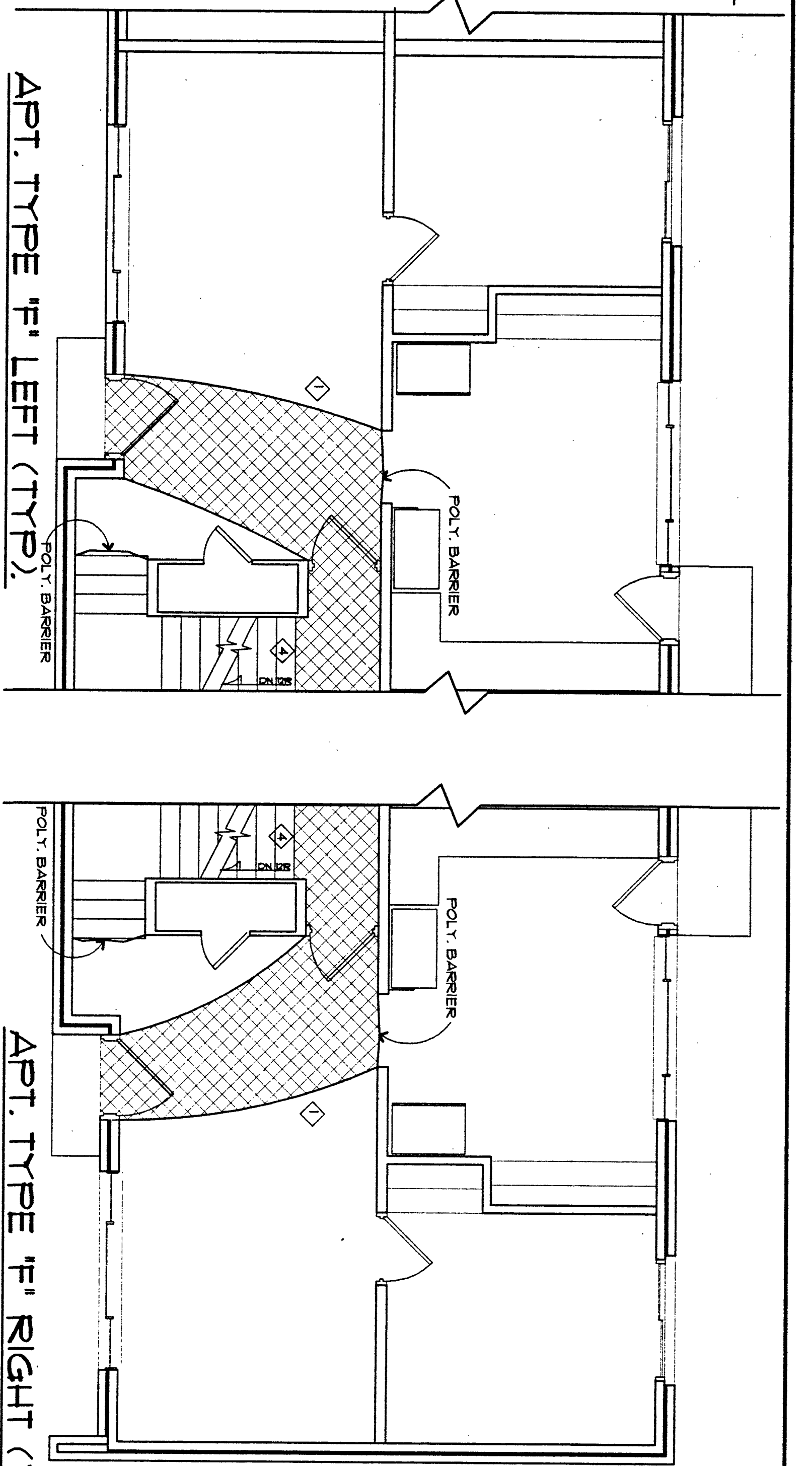


APT. TYPE 'F' LEFT (TYP.)

APT. TYPE 'F' RIGHT (TYP.)



APT. TYPE 'F' LEFT (TYP.)

APT. TYPE 'F' RIGHT (TYP.)

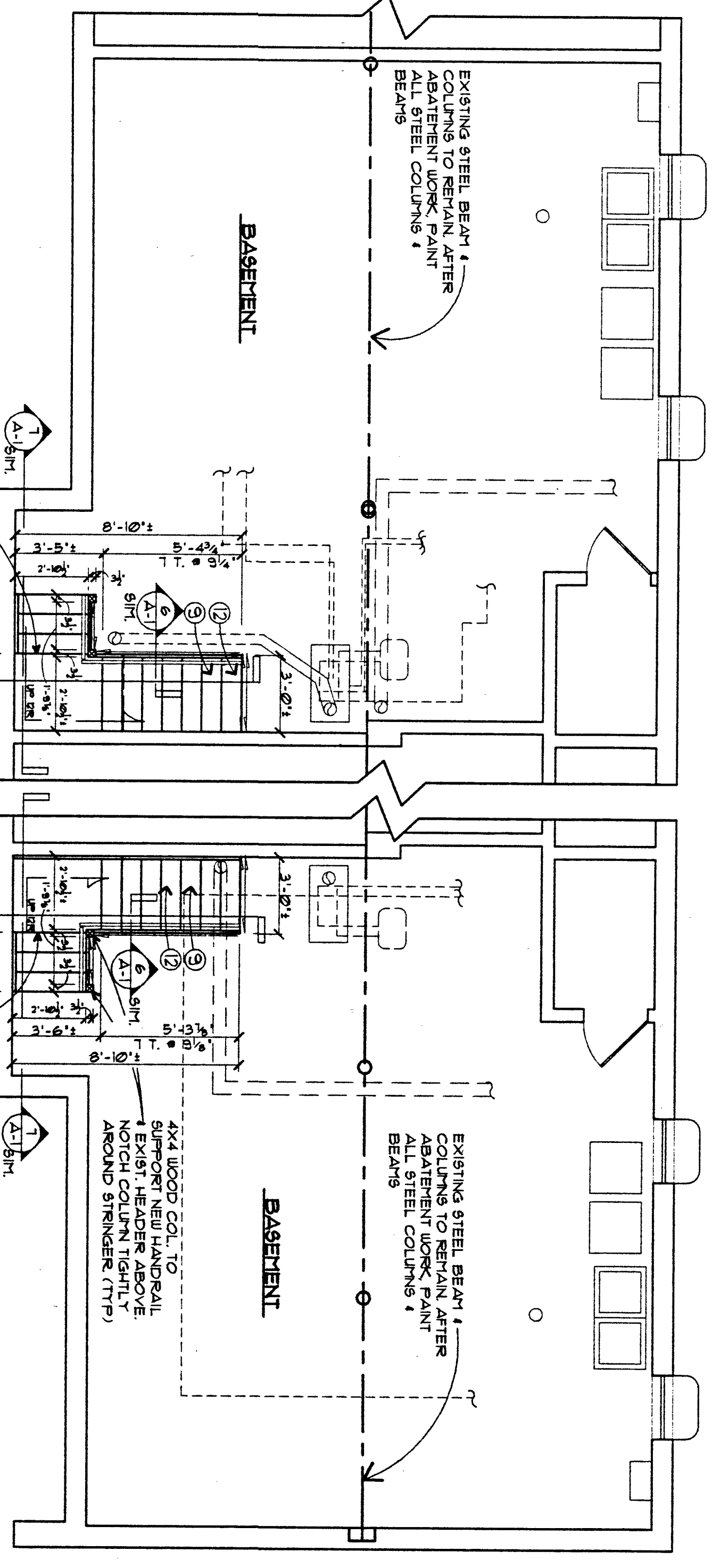
APT. TYPE 'F': LBP ABATEMENT & GENERAL DEMOLITION PLAN
SCALE: 1/4" = 1'-0"

LEAD BASED PAINT (LBP) ABATEMENT NOTES:

- 1. CONSTRUCT 6 MIL POLY FOOT PATH FROM WORK AREA TO DUMPSTER & POLY BARRIERS TO PREVENT CONTAMINATION OF NON-ABATEMENT AREAS FROM LEAD AND INTERIOR EXTERIOR CLEAN & DISPOSE OF POLY FOOT PATH IN MECHANICAL ROOM.
- 2. BASEMENT STAIRS COATED WITH LEAD BASED PAINT IN 53 UNITS. DISMANTLE STAIRS. LEAD COMPONENTS IN 6 MIL POLY SEALED WITH DUCT TAPE. REMOVE TO COVERED DUMPSTER.
- 3. STRUCTURAL BEAM & SUPPORT COLUMNS ARE COATED WITH LBP IN ALL UNITS. CONSTRUCT 6 MIL POLY CONTAINMENT ALONG LENGTH OF BEAM. PROVIDE NEGATIVE AIR TO BE EXHAUSTED TO BUILDING EXTERIOR. REMOVE PAINT FROM STEEL BEAM & SUPPORT COLUMNS.
- 4. TOP STAIR RISER IS COATED WITH LBP IN 53 UNITS. REMOVE PAINT TO WOOD SUBSTRATE.
- 5. IN UNIT 2029, REED LEAD-BASED PRIMER WAS APPLIED TO COPPER PIPE. INCLUDE ABATEMENT OF THIS COMPONENT IN STRUCTURAL BEAM CONTAINMENT.

GENERAL DEMOLITION & LBP ABATEMENT NOTES:

- 1. WHERE MECHANICAL OR PLUMBING SYSTEMS EQUIPMENT OR APPLIANCES ARE USED IN REMOVE LEAD BASED PAINT TO THIS SHEET. CONTRACTOR SHALL REMOVE LEAD BASED PAINT TO THIS SHEET. RELOCATE SUCH MECHANICAL AND PLUMBING SYSTEMS.
- 2. TEMP. RELOCATE ELECTRICAL CIRCUIT AND LOW VOLTAGE WIRING PRIOR TO START OF LBP ABATEMENT AND STAIR CONSTRUCTION WORK. RESTORE ALL WIRING AFTER COMPLETION OF LBP ABATEMENT WORK.
- 3. EXTRACT FOR RE-USE EXISTING REFRIGERATION WORK. REFRIGERANT INTERFERING WITH ACCESS TO STRUCTURAL STEEL. PROVIDE MIN. TEMP. RELOCATION OF PIPING AS REG. FOR FASTENER AND SUPPORT CONDITION TO A FREE CONTRACTOR AFTER COMPLETION OF LBP ABATEMENT AND STAIR ACCESS BY ADDRESS. SEE NOTE THIS SHEET.
- 4. REMOVE STAIR AND HANDRAIL SYSTEM COMPLETE INCLUDING 4"x4" RAIL SUPPORT COLUMNS AND WOOD STAIR PARTITIONS AT BASEMENT LEVEL.
- 5. REMOVE WALL FRAMING AND SHEATHING ON OPEN SIDE OF WHERE APARTMENT ADDRESS CONTAINS ALTERNATE BOILER PACKAGE LOCATION. ASSOCIATED PLUMBING AND MECHANICAL ACCESS TO STRUCTURAL STEEL LBP ABATEMENT WORK THIS LOCATION.
- 6. FIELD VERIFY ALL LOCATIONS BY ADDRESS WHERE SANITARY WASTE PIPING ENCLASERS ACCESS TO STRUCTURAL STEEL (WITHIN 1-1/2' OF STRUCTURAL STEEL). SEE NOTE THIS SHEET.
- 7. BOILER SUPPLY OR SPACE HEATING PIPING MAY ENCLASER ACCESS TO ABATEMENT SURFACES. SEE NOTE THIS SHEET.
- 8. BOILER EXHAUST MAY ENCLASER ACCESS TO ABATEMENT SURFACES. SEE NOTE THIS SHEET.
- 9. DUCTWORK FOR HOT AND COLD WATER PIPING SUPPORTED BY AND ENCLASER ACCESS TO TOP OF ABATEMENT SURFACES. SEE NOTE THIS SHEET.



APT. TYPE 'F' LEFT (TYP.)

APT. TYPE 'F' RIGHT (TYP.)

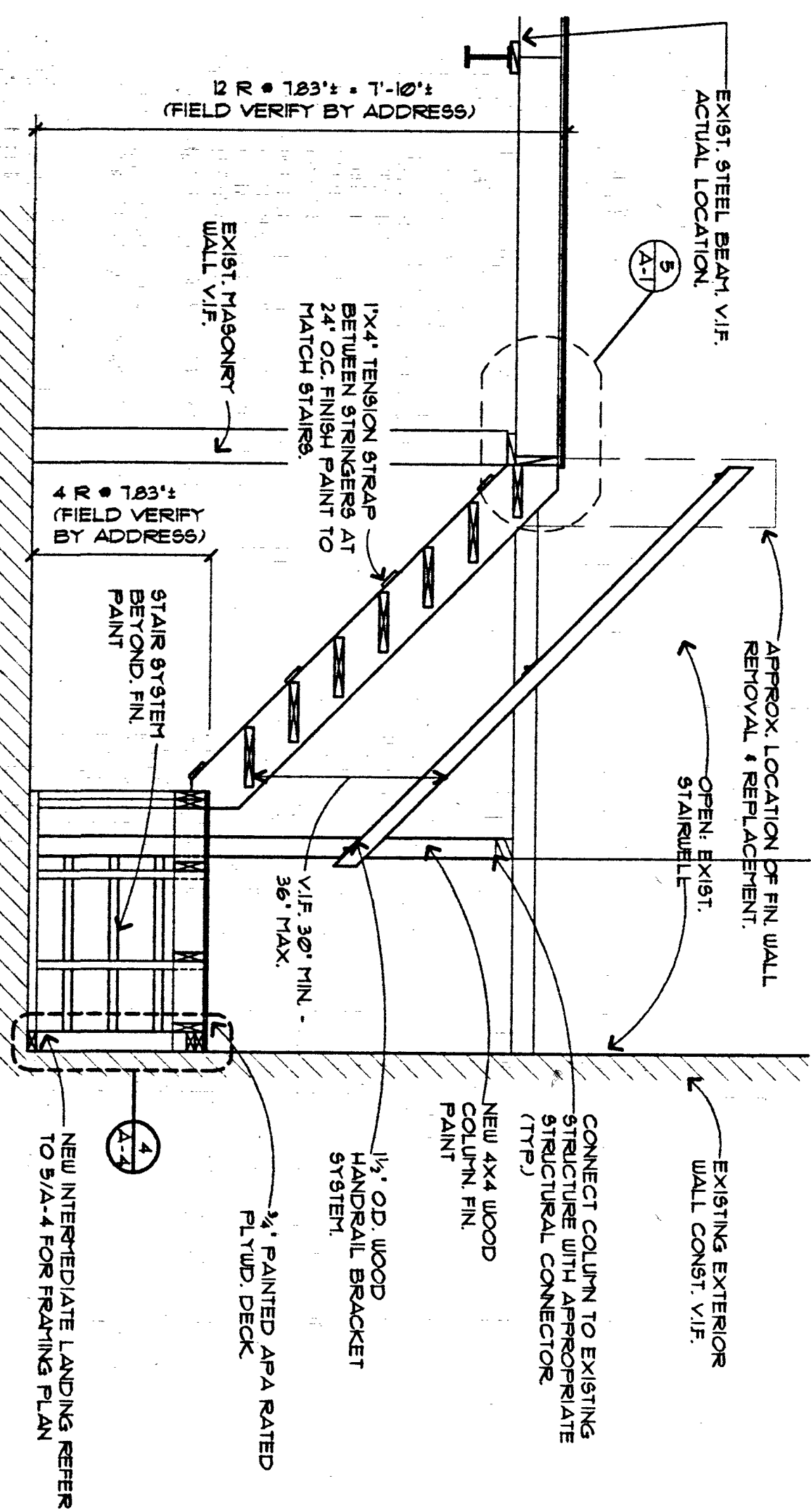
APT. TYPE 'F': NEW CONSTRUCTION AT BASEMENT
SCALE: 1/4" = 1'-0"

GENERAL NOTES: INDICATED THIS ON PLANS.

- 1. CONTRACTOR SHALL MAINTAIN FLOOR DRAIN AND SUMP PITS FREE FROM THE CONSTRUCTION OPERATIONS. WASTE OR DEBRIS AND THE SYSTEM RESTORED TO A FREE CONTRACTOR CONDITION BY THE RESPONSIBLE CONTRACTOR.
- 2. EXISTING ELEVATED COPPER SANITARY WASTE PIPING, EXACT LOCATION VARIES BY ADDRESS. FIELD VERIFY ACTUAL LOCATION.
- 3. EXISTING BOILER PACKAGE VENTING SYSTEM, AND OVERHEAD PACKAGE LIMITS ACCESS TO STRUCTURAL STEEL & STAIR WORK AREAS. (TYP.)
- 4. EXISTING HULL HEAT LINE LOCATION AND QUANTITY VARY BY ADDRESS. FIELD VERIFY ACTUAL LOCATION AND QUANTITY.
- 5. EXISTING FIELD VENT ACTUAL LOCATION AND QUANTITY VARY BY ADDRESS. FIELD VERIFY ACTUAL LOCATION AND QUANTITY.
- 6. FRESH AIR INTAKE PIPING, LIMITS ACCESS TO STRUCTURAL STEEL. FIELD VERIFY ACTUAL CONDITIONS.

- 1. EXIST. BOILER WATER SUPPLY PIPING, V.I.F.
- 2. ALTERNATE FRESH AIR INTAKE ORIENTATION.
- 3. CONSTRUCT REPLACEMENT STAIR WITHIN EXISTING STAIR OPENING.
- 4. WASTE PIPING SUPPORTED FROM ABOVE. PIPE ELEVATION VARIES APPROX. 3'-5" ABOVE FINISHED BASEMENT FLOOR. CONTRACTOR TO PENETRATE STAIR WALL IS TO BE REMOVED. CONTRACTOR TO PROTECT PIPE DURING STAIR ABATEMENT, DEMOLITION, AND NEW CONSTRUCTION ACTIVITIES.
- 5. CONTRACTOR TO V.I.F. ACTUAL EXIST. DRILLED RAIL BRACKET LOCATION. ABANDON EXIST. REQUIRING RAIL ELEVATION IS NOT HOLES WITH REIN. FIBERGLASS REIN. PIPING AND ABANDONED BRACKET SMOOTH & PREP. FOR FIN. PAINT. PREP. COLUMN FOR INSTALLATION OF NEW BRACKET SYSTEM AT REQUIRED ELEVATION.
- 6. PAINT EXISTING STAIRWELL WALLS AND CEILING SURFACES.

STAIR DETAIL
SCALE: 1/2" = 1'-0"



Architecture Unlimited

Project: 116493_1044
15 Webster Street
North Tonawanda, New York 14120

Project: LEAD BASED PAINT ABATEMENT AND BASEMENT STAIR REPLACEMENT AT JORDAN GARDENS DEVELOPMENT NIAGARA FALLS HOUSING AUTHORITY NIAGARA FALLS, NEW YORK

Drawing Title: APARTMENT TYPE F PLANS AND DETAILS

Project No.	116493_1044	Date	02/09/20
Drawn by	SP/ACZ	Check	AS NOTED
Scale			

A-6