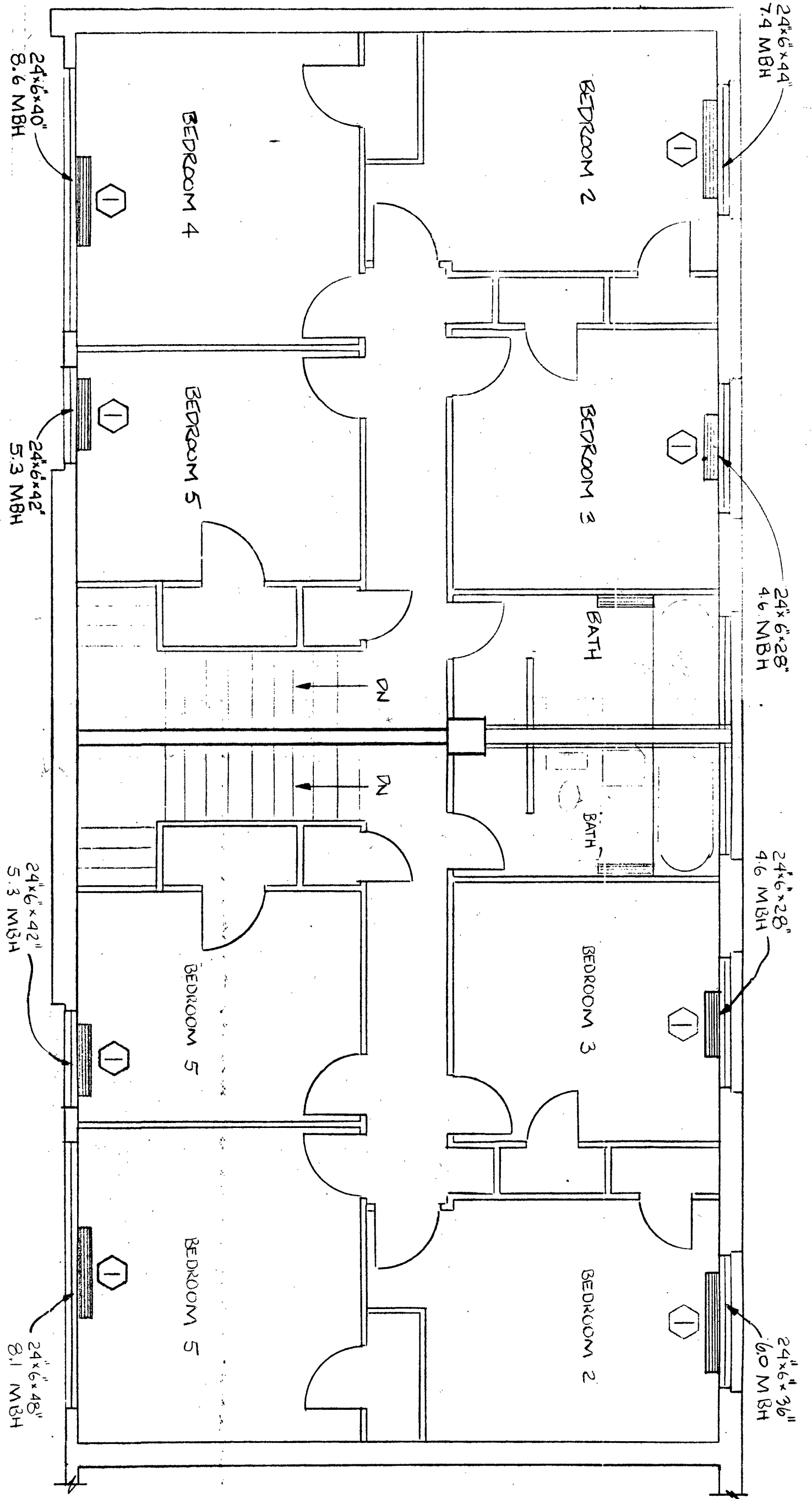
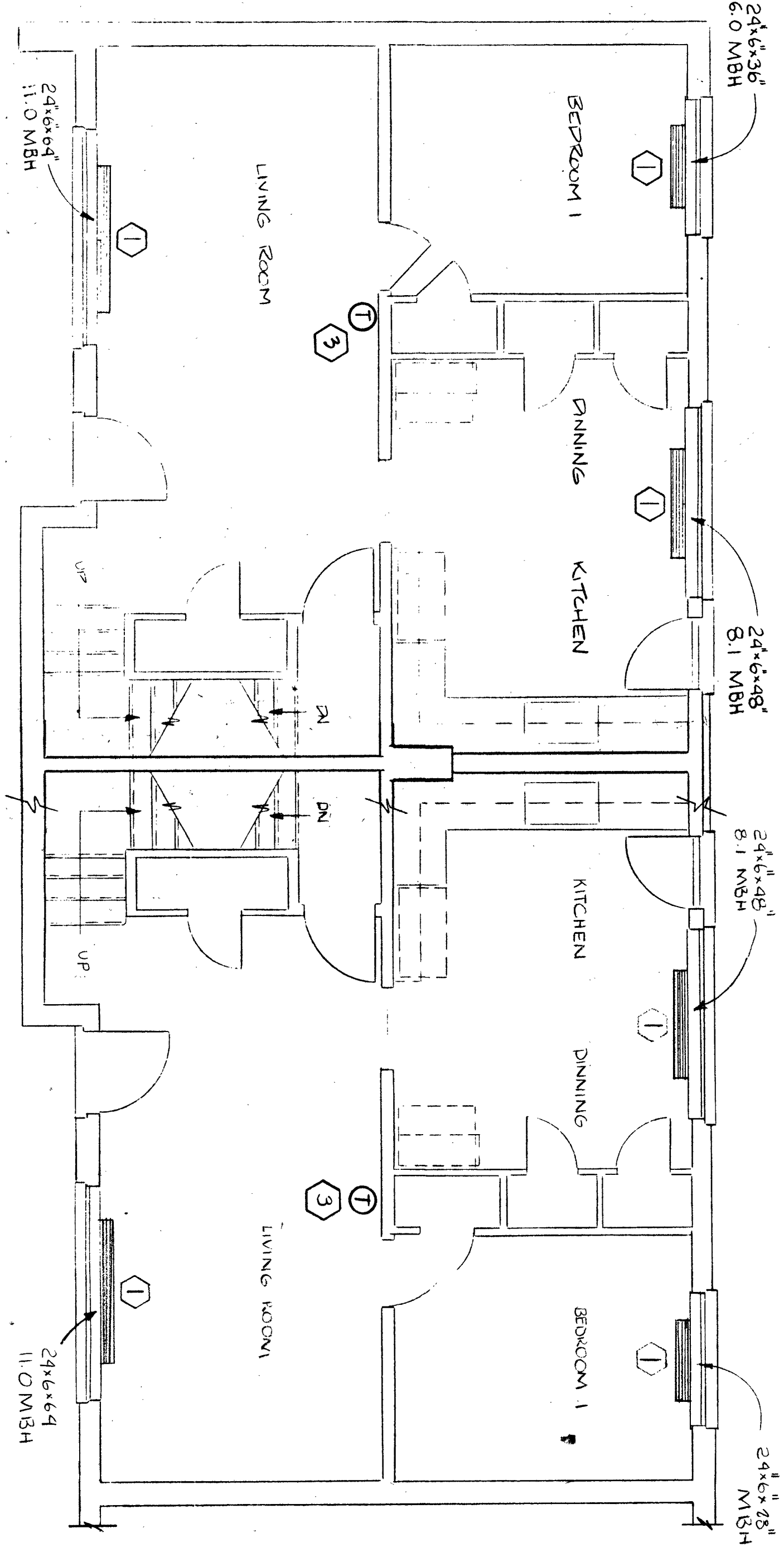


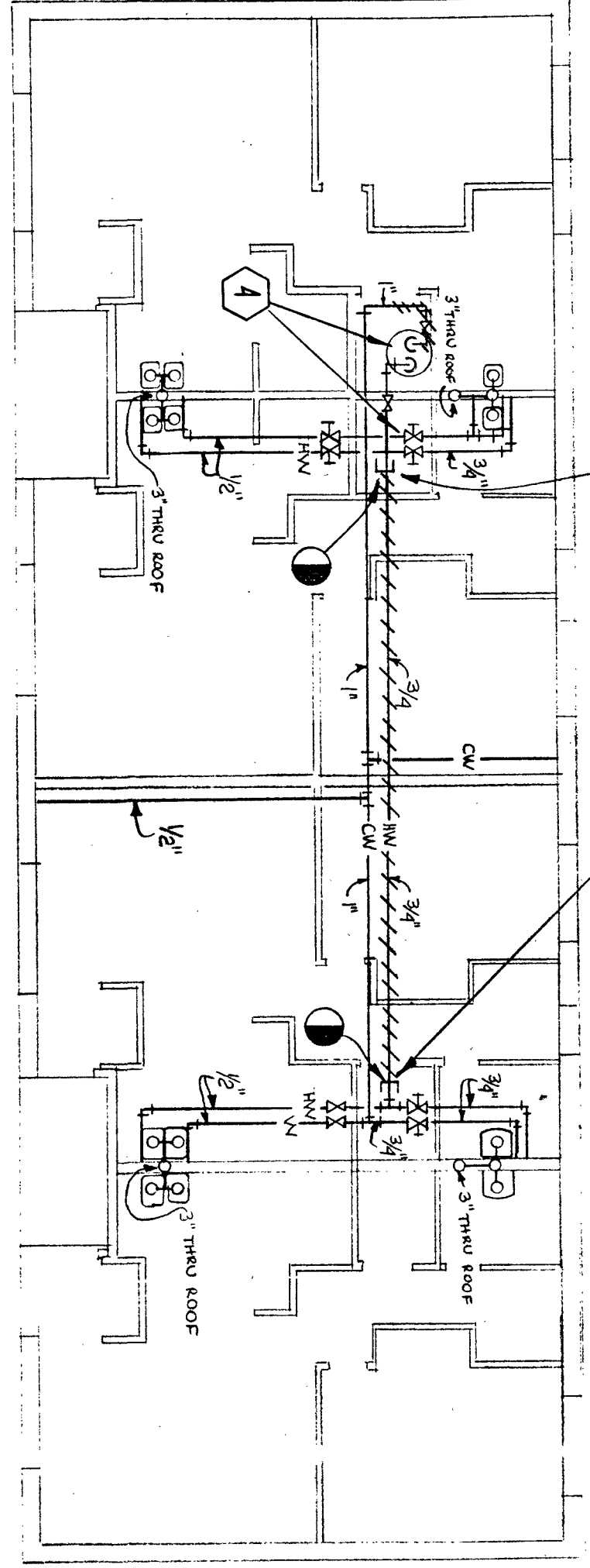
DISCONNECT DHW PIPING ABOVE CEILING AT POINTS OF REMOVAL AS INDICATED. CAP ENDS AND PATCH CEILING AS REQUIRED TO MATCH EXISTING. ABANDON DISCONNECTED DHW PIPE.



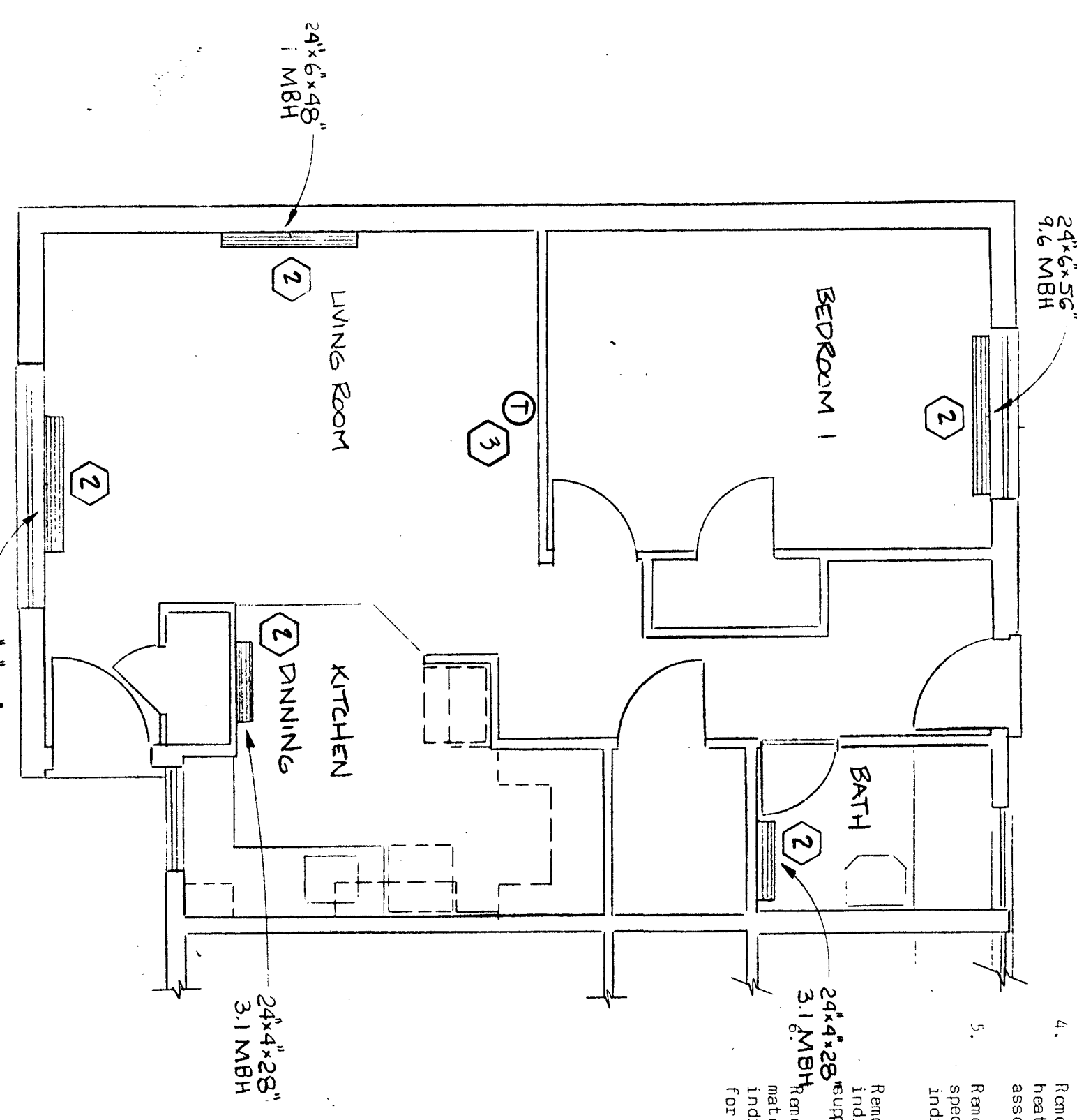
SECOND FLOOR PLAN - REMOVAL
APT. TYPE C & C-1
5 BEDROOM UNIT
SCALE: 1/4"=1'-0"



FIRST FLOOR PLAN - REMOVAL
APT. TYPE C & C-1
5 BEDROOM UNIT
SCALE: 1/4"=1'-0"



FIRST FLOOR PLAN - REMOVAL
APT. TYPE D, D-1, D-1, & D
1 BEDROOM BLDG.
SCALE: 1/8" = 1'-0"



FIRST FLOOR PLAN - REMOVAL
APT. TYPE D & D-1
1 BEDROOM UNIT
SCALE: 1/4"=1'-0"

REMOVAL NOTES

1. Remove existing fin tube, header, and valve. Prepare piping for installation of new fin of length and capacity as shown on alteration drawings.
 2. Remove existing connector, cap-off supply and return riser in crawl space and patch floor to match existing. (Existing pipe in crawl space to remain).
 3. Remove existing thermostat and patch wall to match existing.
 4. Remove existing boiler, domestic hot water heater, pumps, expansion tank, flue and associated piping and accessories.
 5. Remove existing supply header and pipe specialties in Mechanical Room as indicated on drawing.
- Remove supply pipe sections serving individual zones and cap-off connection at individual zones and cap-off connection at supply mains.
Remove existing return header and related material. Remove return piping serving individual zones and cap-off connection for respective zones, at return mains.

COMPREHENSIVE IMPROVEMENT ASSISTANCE PROGRAM
NIAGARA FALLS HOUSING AUTHORITY
744 TENTH STREET
NIAGARA FALLS, N.Y. 14301

PROJECT MECHANICAL ALTERATIONS AT VARIOUS SITES FOR N. F. H. A.	TITLE JORDAN GARDENS HEATING REHABILITATION FLOOR PLANS	DATE 2/16/90	DRAWING M-2
SCALE AS NOTED	PROJECT NO. 87/122		

ARCHITECTS
STIEGLITZ STIEGLITZ TRIES P.C.
45 ALLEN STREET
BUFFALO, N.Y. 14202 (716) 881-6338

MECHANICAL CONSULTANT
MANIKTALA ASSOCIATES
2829 SHERIDAN DRIVE
BUFFALO, N.Y. 14217 (716) 833-7194

P.O. BOX 178
NIAGARA FALLS, N.Y. 14301