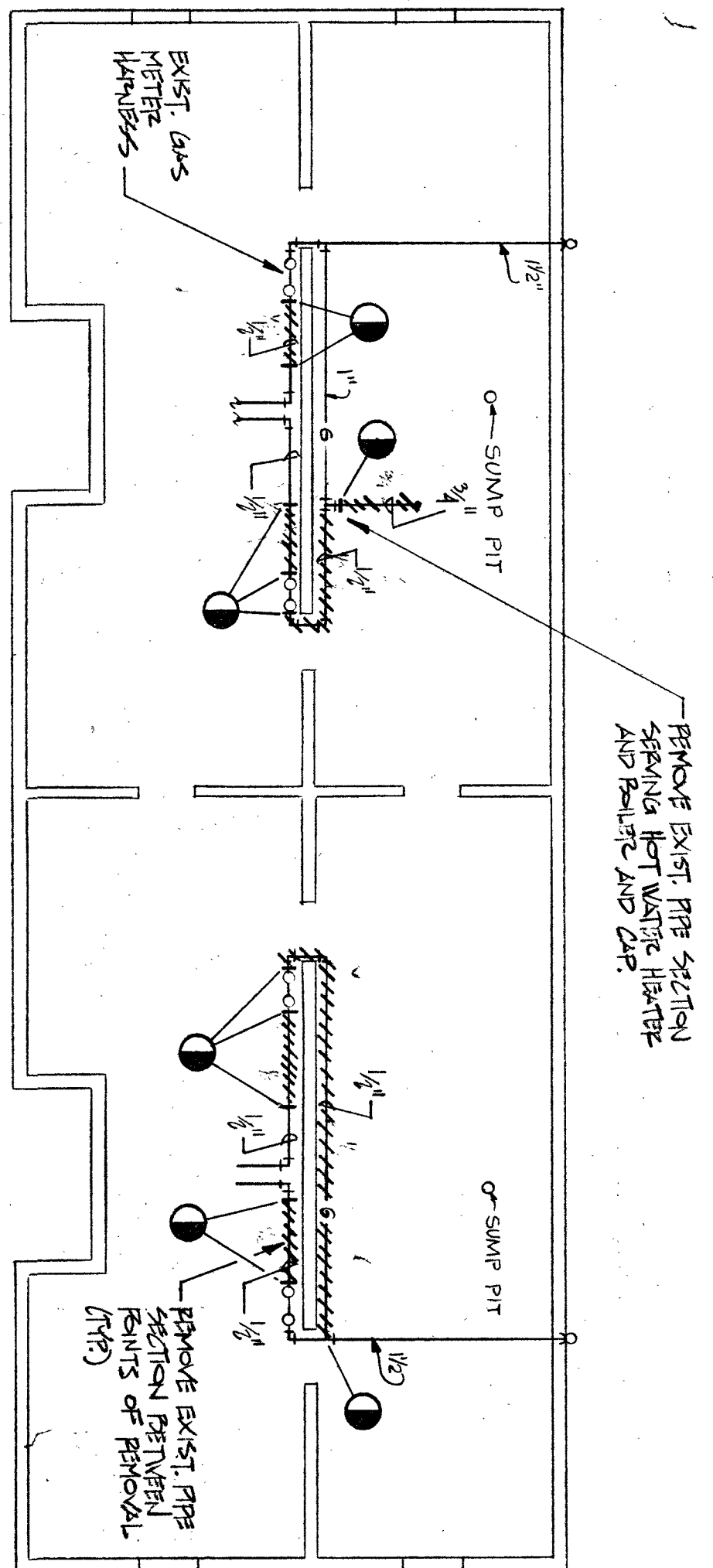


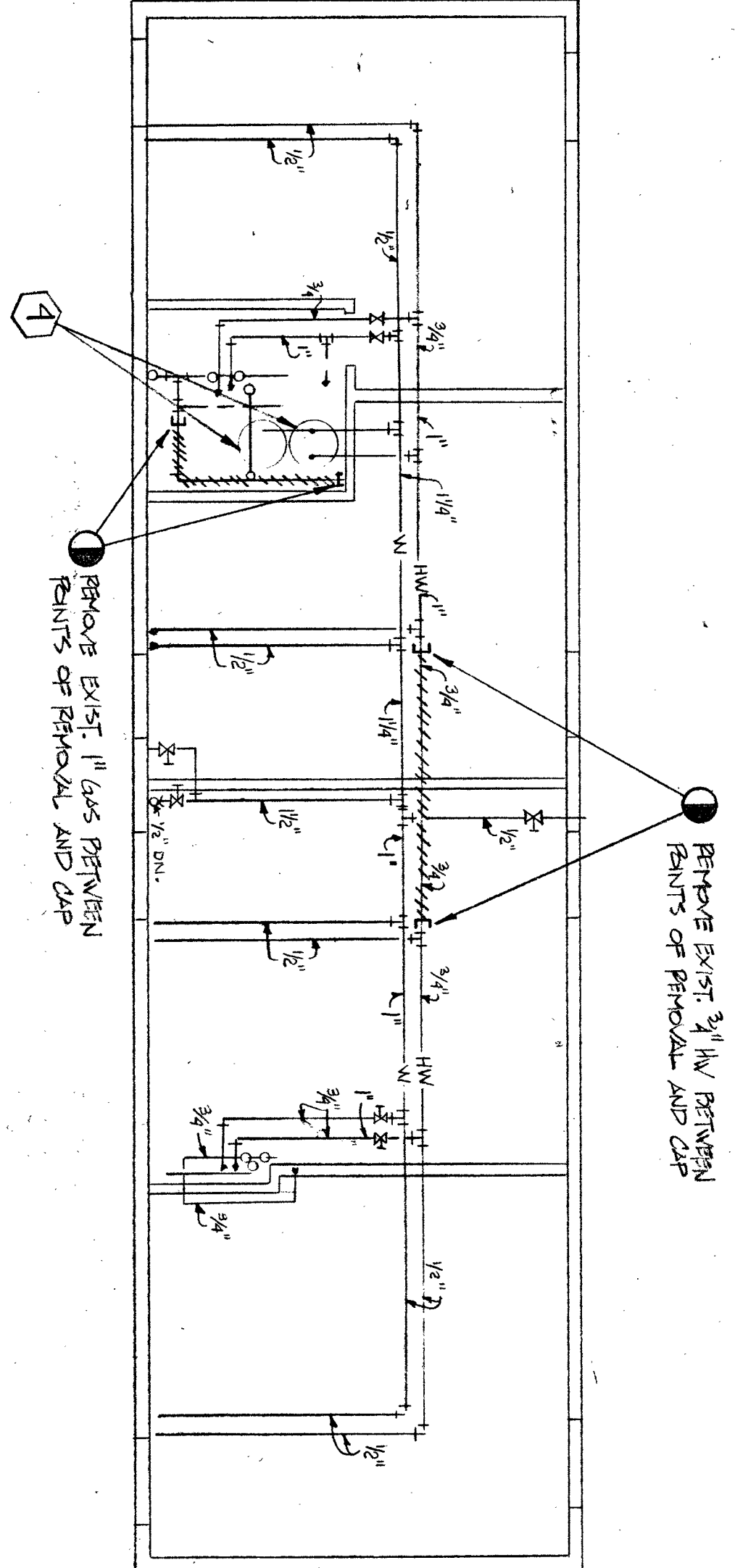
ARCHITECTS
STIEGLITZ STIEGLITZ TRIES P.C.
 45 ALLEN STREET
 BUFFALO, N.Y. 14202 1/761-891-6338

MECHANICAL CONSULTANT
MANIKITALA ASSOCIATES
 2929 SHERIDAN DRIVE
 BUFFALO, N.Y. 14217 1/761-833-7194

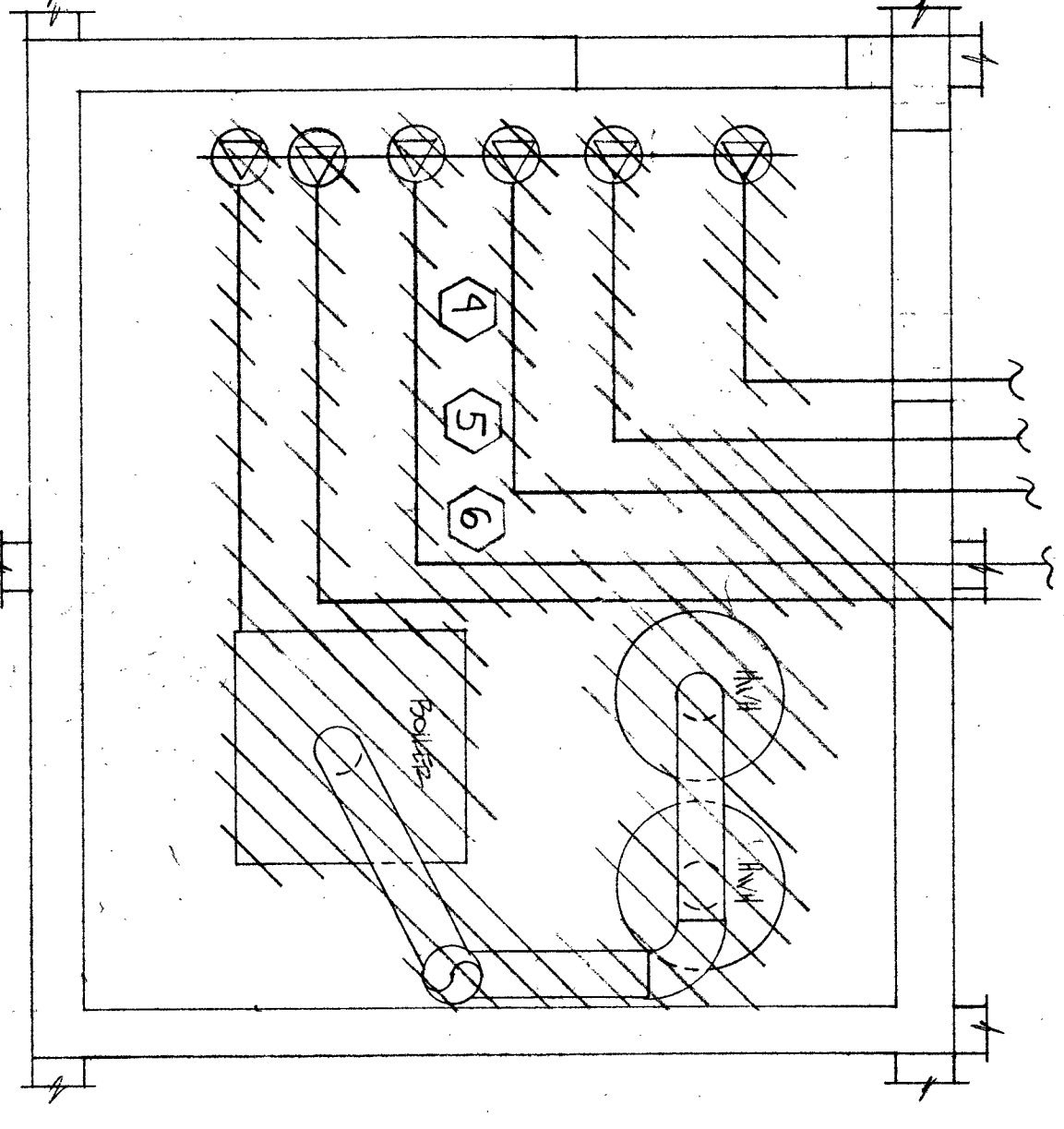
P.O. BOX 178
 1/761-833-7194



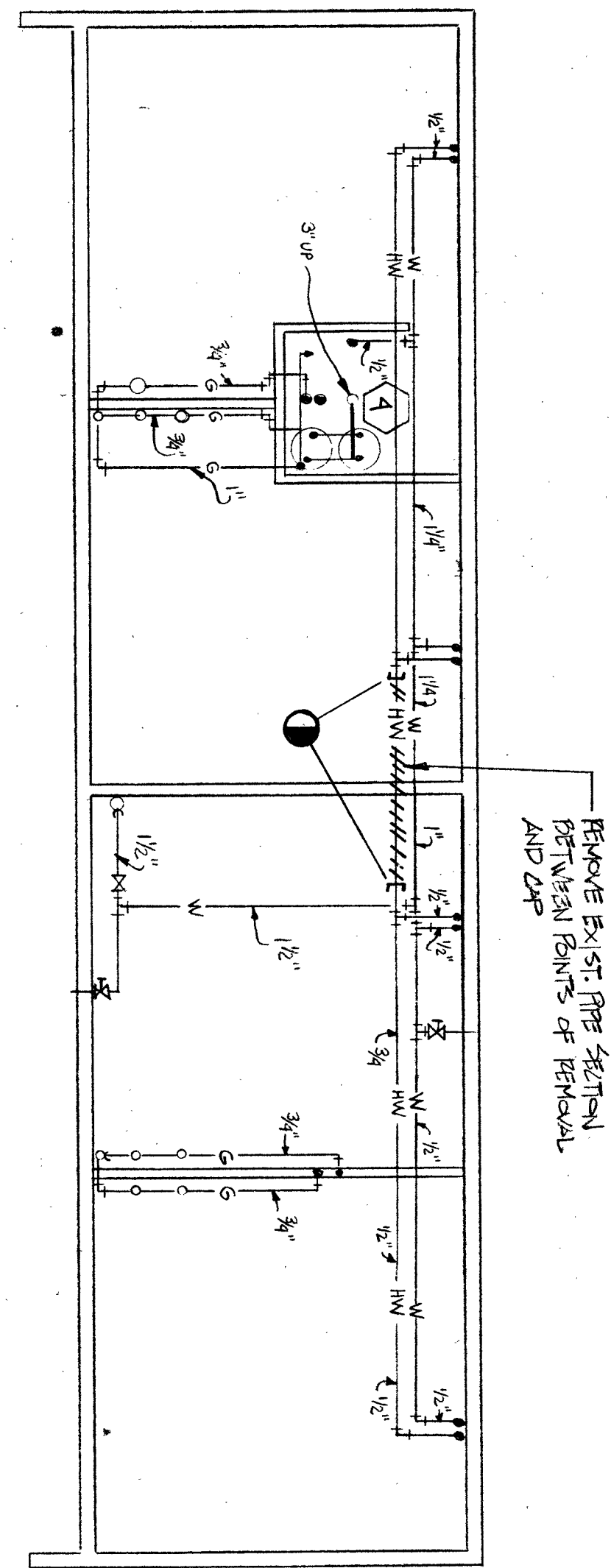
CRAWL SPACE FLOOR PLAN - REMOVAL
 APT. TYPE D, D-1, D-1, & D
 1 BEDROOM BLDG.
 SCALE: 1/8"=1'-0"



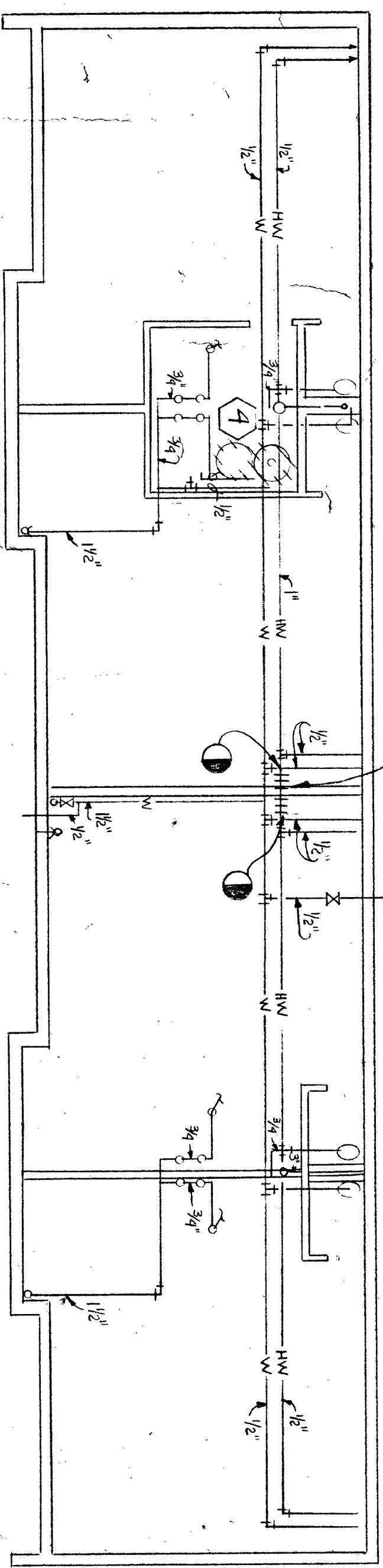
BASEMENT FLOOR PLAN - REMOVAL
 APT. TYPE A, A-1, A-1, & A
 4 BEDROOM BLDG.
 SCALE: 1/8"=1'-0"



TYPICAL BOILER ROOM LAYOUT
 (REMOVAL)
 SCALE: 1/2"=1'-0"



BASEMENT FLOOR PLAN - REMOVAL
 APT. TYPE B, B-1, B-1, & B
 3 BEDROOM BLDG.
 SCALE: 1/8"=1'-0"



BASEMENT FLOOR PLAN - REMOVAL
 APT. TYPE C, C-1, C-1, & C
 5 BEDROOM BLDG.
 SCALE: 1/8"=1'-0"

REMOVE EXIST. DHW PIPE BETWEEN RIS OF REMOVAL AND CAP ENDS.

- REMOVAL NOTES**
1. Remove existing fire tube, header and new fin of length and capacity as shown on alteration drawings.
 2. Remove existing connector, cap-off supply and return pipe in crawl space and patch in crawl space to remain. (Existing pipe to match existing).
 3. Remove existing thermostat and patch wall to match existing.
 4. Remove existing boiler, domestic hot water heater, pumps, expansion tank, flue and associated piping and accessories.
 5. Remove existing supply header and pipe indicated on drawing.
 6. Remove supply pipe sections serving individual risers and cap-off connection at supply mains.
- Remove existing return header and related material. Remove return piping serving individual risers and cap-off connection at respective zones, at return mains.

COMPREHENSIVE IMPROVEMENT ASSISTANCE PROGRAM

NIAGARA FALLS HOUSING AUTHORITY
 744 TENTH STREET
 NIAGARA FALLS, N.Y. 14301

PROJECT MECHANICAL ALTERATIONS AT VARIOUS SITES FOR N. F. H. A.	
TITLE JORDAN GARDENS HEATING REHABILITATION FLOOR PLANS	
DATE 2/16/90	DRAWING
SCALE AS NOTED	M-3
PROJECT NO. 97/122	