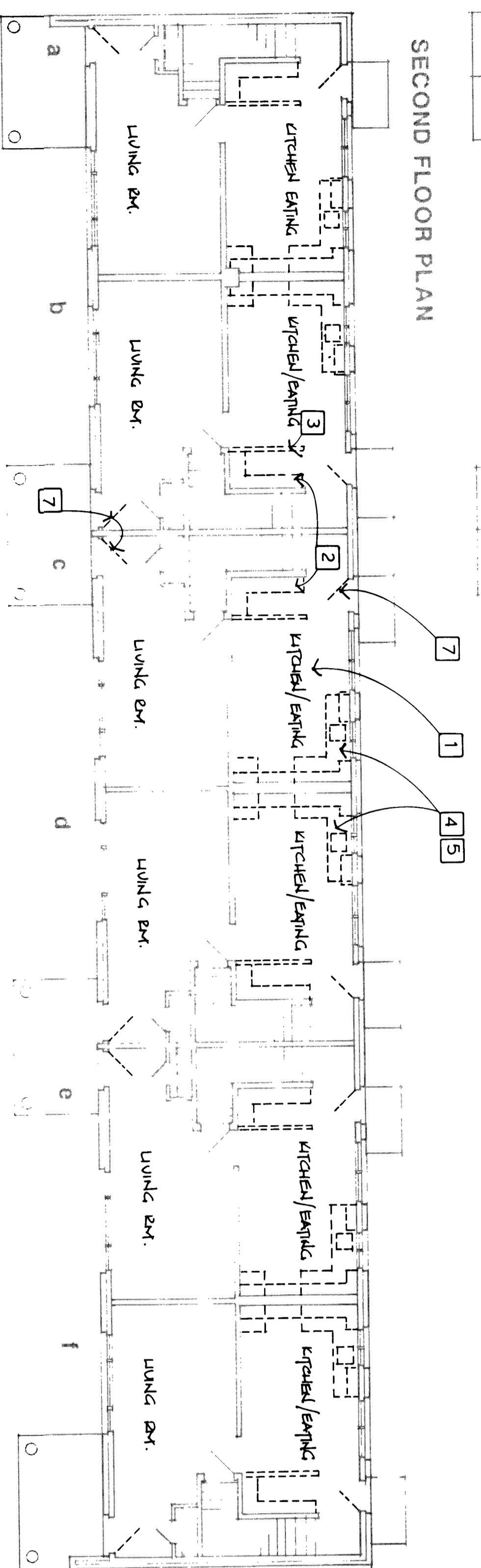
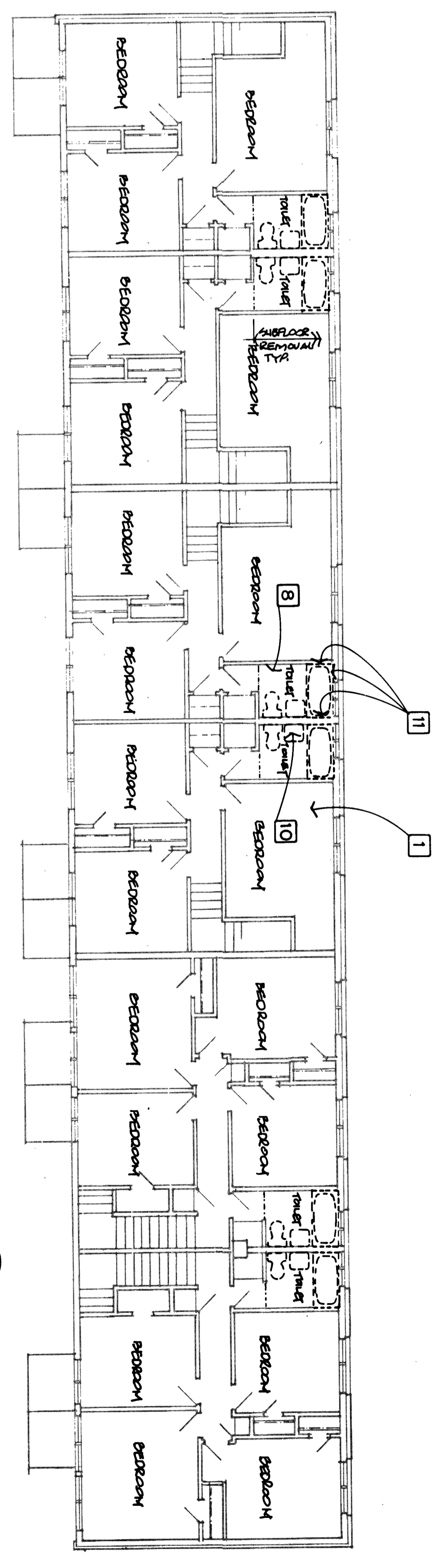


SECOND FLOOR PLAN

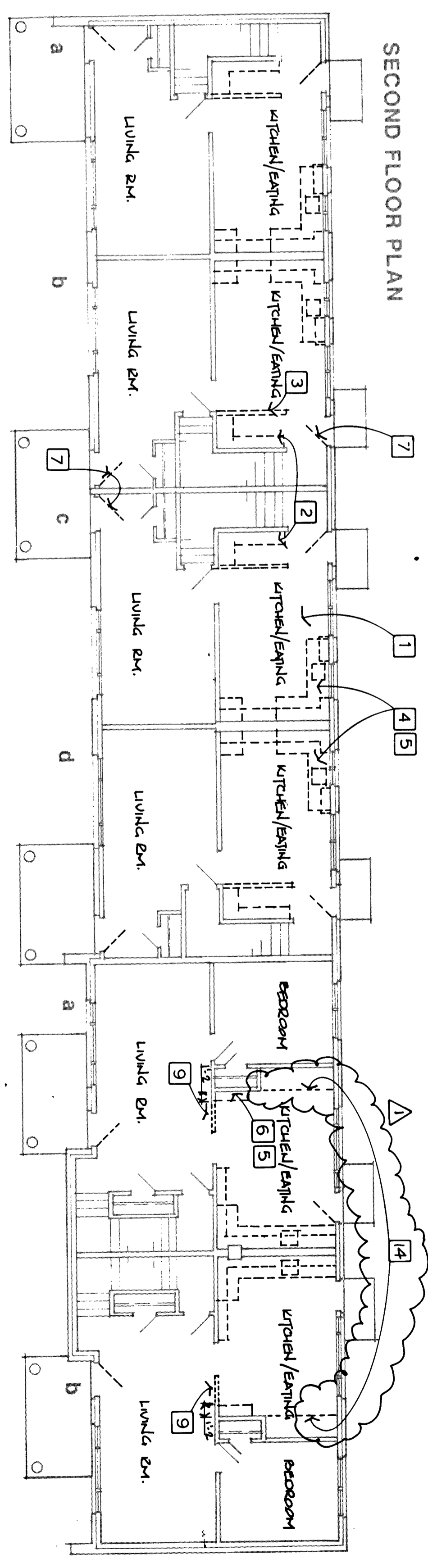


FIRST FLOOR PLAN

6-3 BEDROOMS
BUILDING NOS. 9, 22

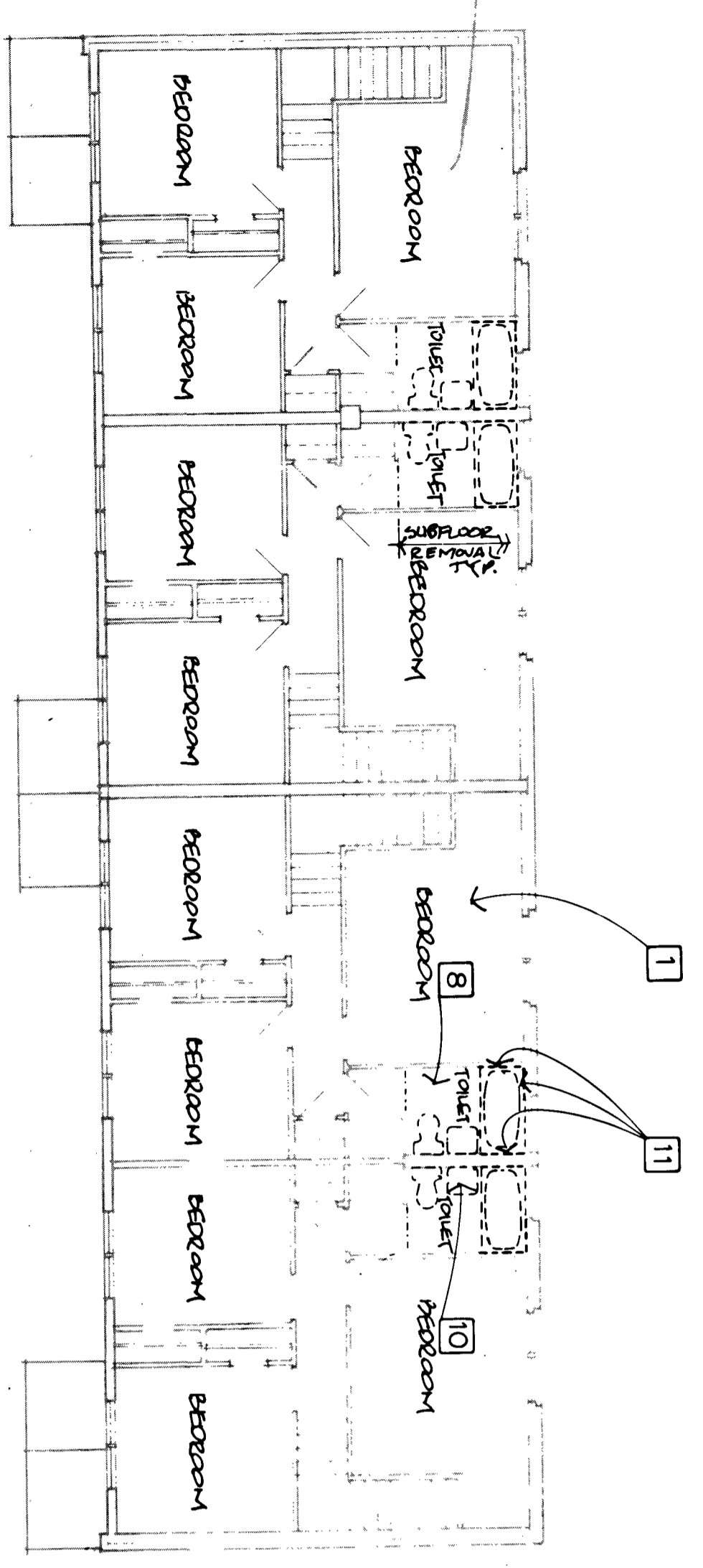


SECOND FLOOR PLAN

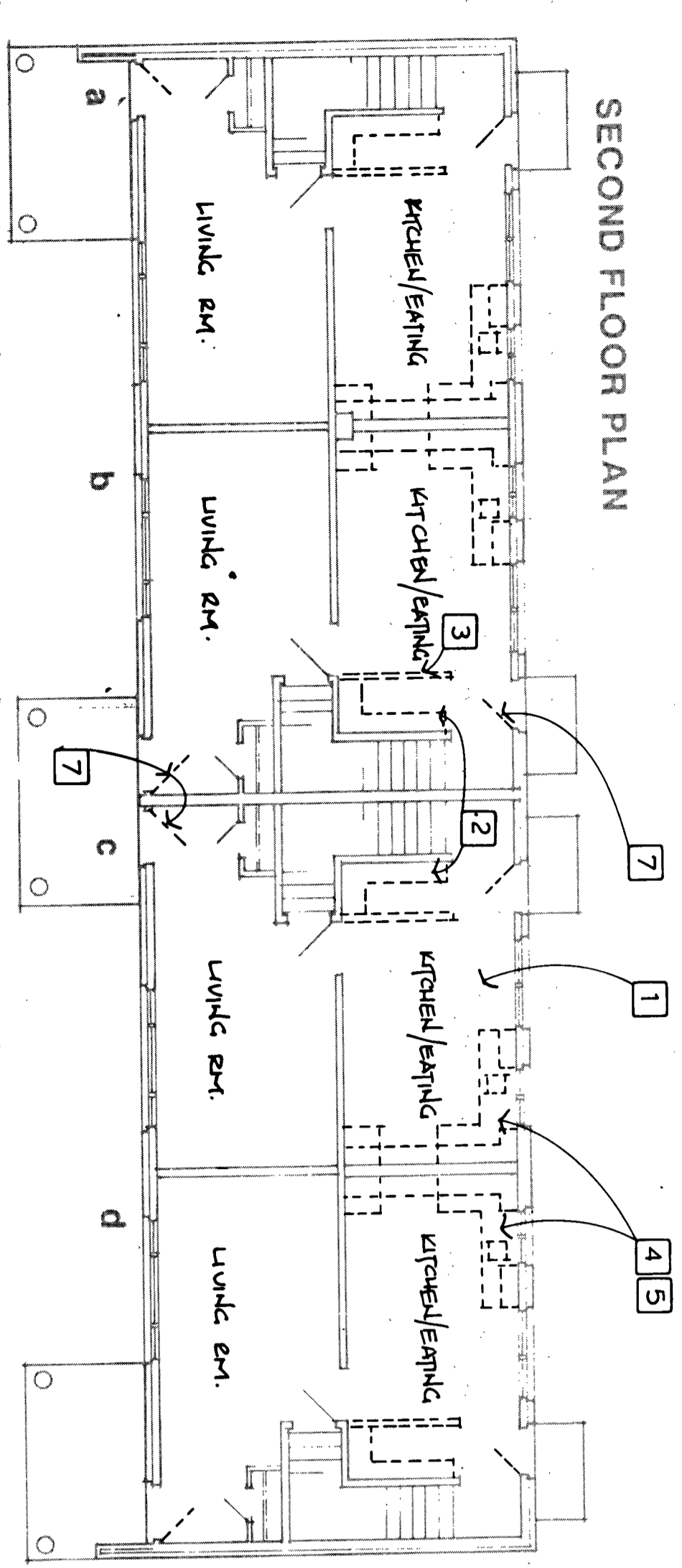


FIRST FLOOR PLAN

4-3 BEDROOMS / 2-5 BEDROOMS
BUILDING NOS. 10, 11

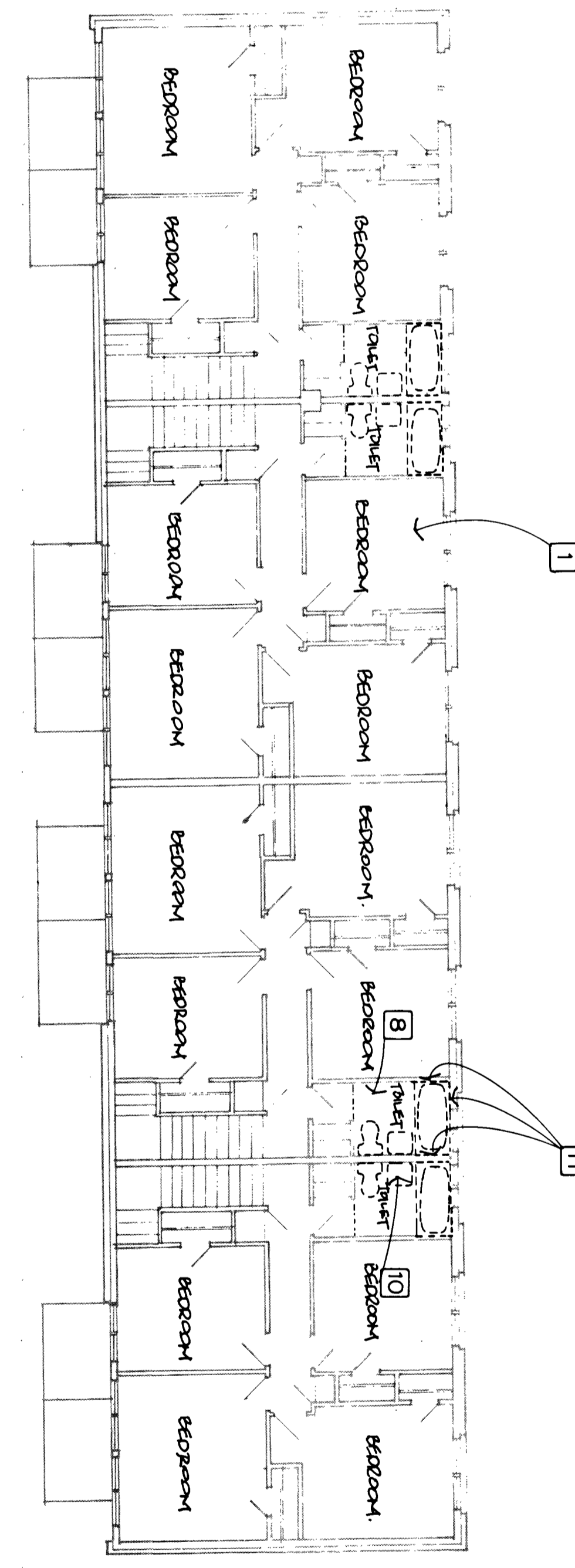


SECOND FLOOR PLAN

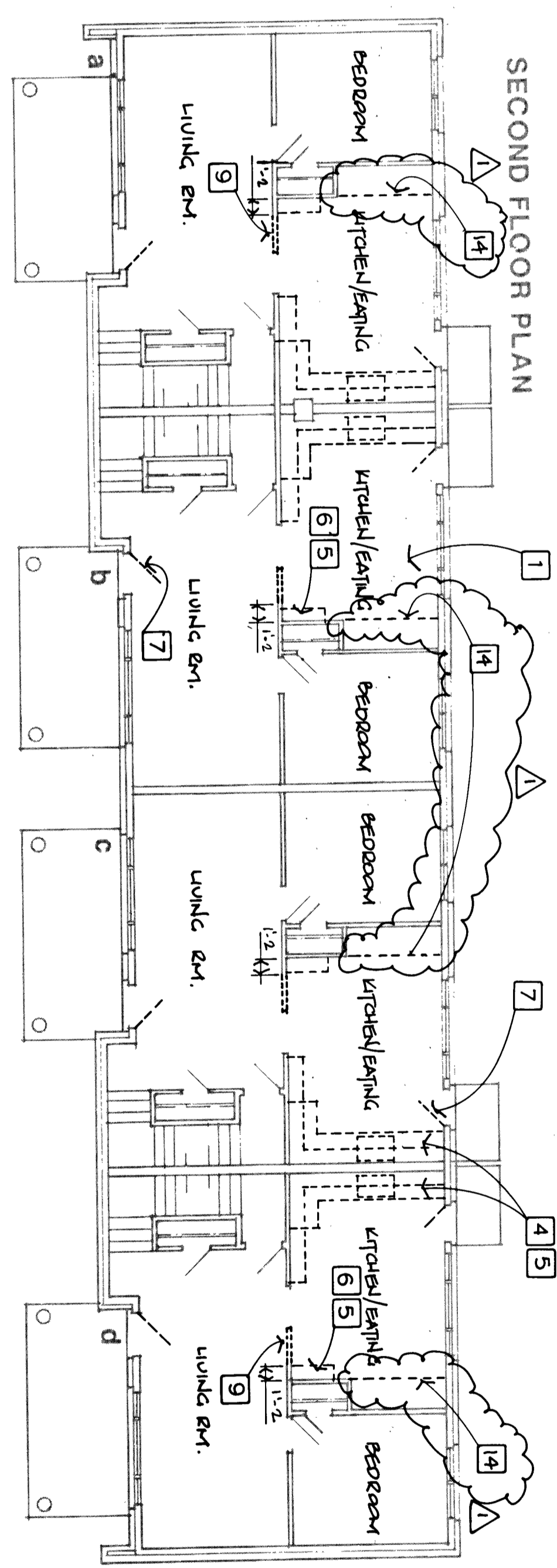


FIRST FLOOR PLAN

4-3 BEDROOMS
BUILDING NOS. 1, 2, 3, 4, 5, 6, 7, 8, 19



SECOND FLOOR PLAN



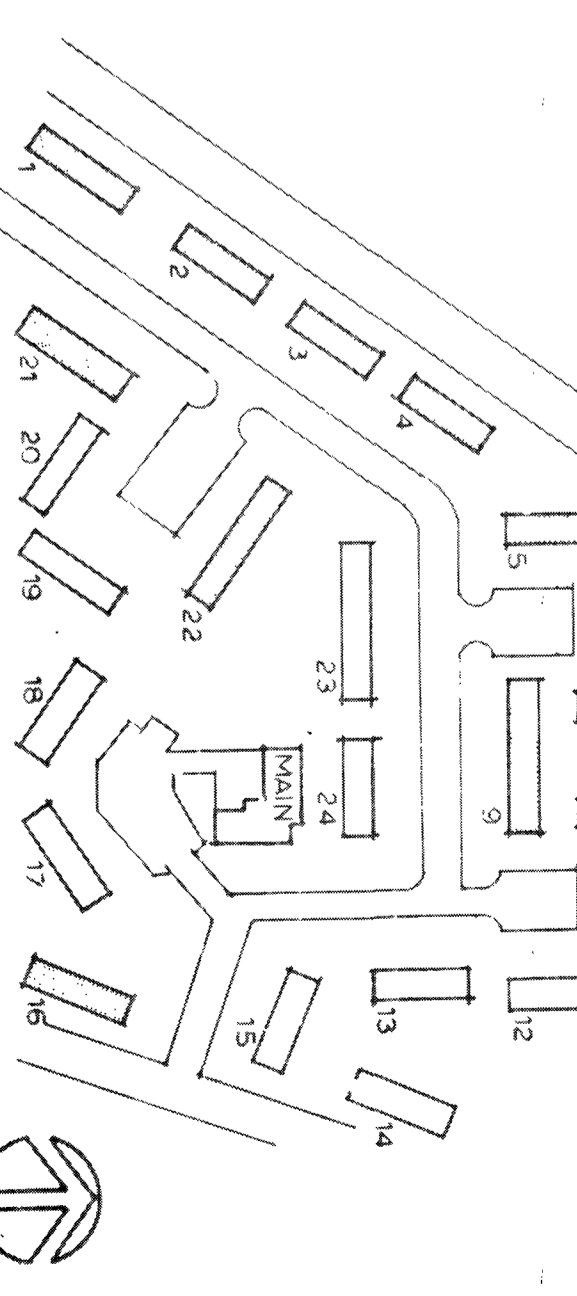
FIRST FLOOR PLAN

4-5 BEDROOMS
BUILDING NO. 21

NOTE: ASBESTOS & PIPE INSULATION AT BUILDINGS 10 & 11. ASBESTOS AT BUILDINGS 10 & 11 IS REMOVED UNDER CONTRACT.

DEMOLITION NOTES

1. ALL EXISTING FLOORING MATERIALS ARE TO BE REMOVED DOWN TO THE RAYWOOD UNDERLAYMENT (VW) INCLUDING THE ADHESIVE. THE REMOVAL OF ANOTHER LAYER OF RAYWOOD UNDERLAYMENT AND VINYL COMPOSITION TILE (VCT), INSTALLED OVER THE VW, IS TYPICAL IN ALL UNITS. SEE ASBESTOS ABATEMENT DRAWING 3, NOTES FOR STAIRS ON DRAWING 3.
2. REMOVAL OF ALL VINYL COVER BASE AND PARADEL ADHESIVE WHICH CONTAIN TRACE AMOUNTS OF ASBESTOS IS TO BE REMOVED. ALL MATERIALS CONTAINING ASBESTOS WILL BE REMOVED FROM THE SURFACE TO FACILITATE RENOVATION OF WALL. TYPICAL IN ALL UNITS.
3. ALL STAIRS HAVE VINYL TREAD COVERS. THESE COVERS ARE TO BE REMOVED AND REMAINING ADHESIVE CLEANED FROM STAIRS. ALL STAIR LANDINGS HAVE FLOORING MATERIALS AS DESCRIBED ABOVE. ALL MATERIALS CONTAINING ASBESTOS WILL BE REMOVED BY APARTMENT CONTRACTOR.
4. IT IS GENERALLY UNDERSTOOD THAT THE ORIGINAL UNDERLAYMENT UNDER THE VINYL ASBESTOS (VW) WAS APPLIED UNDER ALL PARTITIONS ON THE 1ST AND 2ND FLOOR. SEE FIRST AND SECOND FLOOR DETAILS 1/3 AND 2/5.
5. PRIOR TO REMOVAL ALL HEAVY COVERS WITH BACK PLATES ARE TO BE REMOVED CAREFULLY REMOVED AND STORED IN A SAFE LOCATION.
6. REMOVE EXISTING RAYWOOD SUBFLOOR AS NOTED ON DRAWINGS. TYPICAL IN ALL UNITS.
7. REMOVE EXISTING PARTITION WALLS. TYPICAL IN ALL ONE AND THREE BEDROOM UNITS.
8. REMOVE EXISTING PARTITION WALLS. TYPICAL IN ALL ONE AND THREE BEDROOM UNITS.
9. REMOVE EXISTING PARTITION WALLS. TYPICAL IN ALL ONE AND THREE BEDROOM UNITS.
10. REMOVE EXISTING PARTITION WALLS. TYPICAL IN ALL ONE AND THREE BEDROOM UNITS.
11. REMOVE EXISTING PARTITION WALLS. TYPICAL IN ALL ONE AND THREE BEDROOM UNITS.
12. REMOVE EXISTING PARTITION WALLS. TYPICAL IN ALL ONE AND THREE BEDROOM UNITS.
13. REMOVE EXISTING PARTITION WALLS. TYPICAL IN ALL ONE AND THREE BEDROOM UNITS.
14. REMOVE EXISTING PARTITION WALLS. TYPICAL IN ALL ONE AND THREE BEDROOM UNITS.



DEMOLITION FLOOR PLANS

WARNING: ATTENTION TO THIS DOCUMENT IS REQUIRED TO AVOID INJURY OR DEATH. THIS DOCUMENT IS NOT TO BE USED FOR CONSTRUCTION OF ANY STRUCTURE. STATE EDUCATION LAW, SECTION 1707(2) (b) (3) NOT PUBLISHED. ALL RIGHTS RESERVED.

LNW	WAS	MCF	RM	G
B	D	2		
B	D	2		

REVISIONS
11 APRIL 44 - 44' DETAILS

JORDAN GARDENS - CIAP
NIAGARA FALLS HOUSING AUTHORITY
HIGHLAND AVE. AT EASTON DR.
NIAGARA FALLS, NEW YORK

NY 11-2

Trautman Yeg Management Associates, P.C., Architects and Engineers
40 Franklin Street, Buffalo, NY 14202, (716) 883-4400

TRAUTMAN ASSOCIATES

32025
1/8" = 1'-0"
16 NOV 92
2

