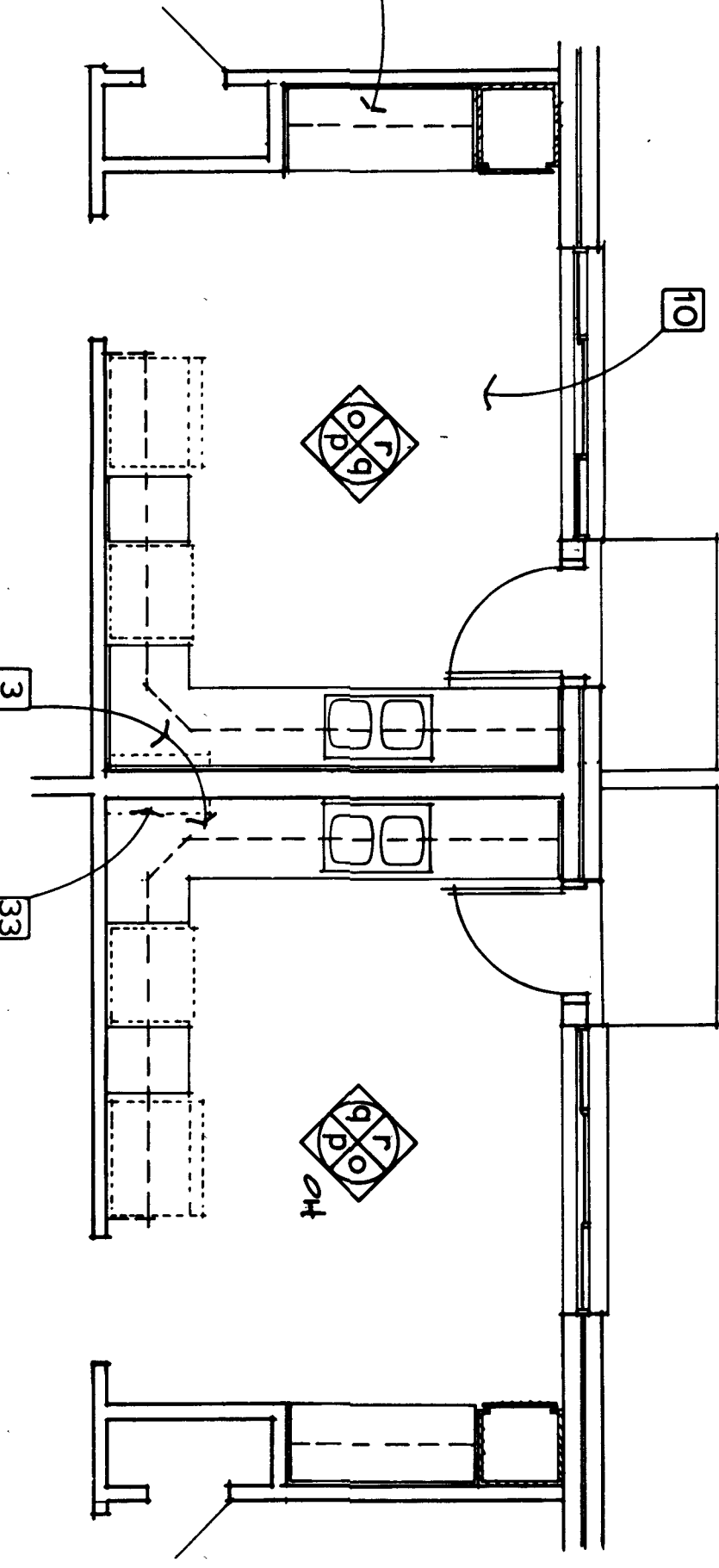
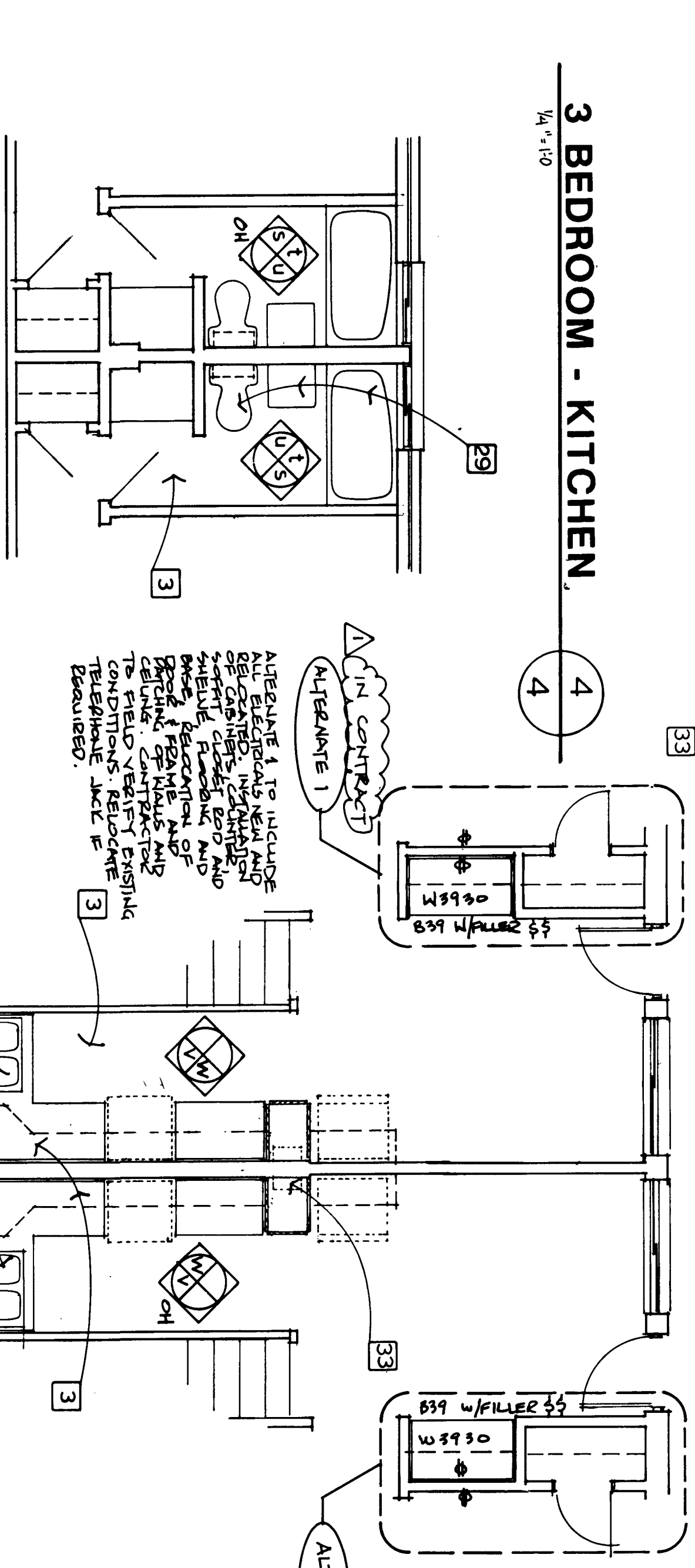
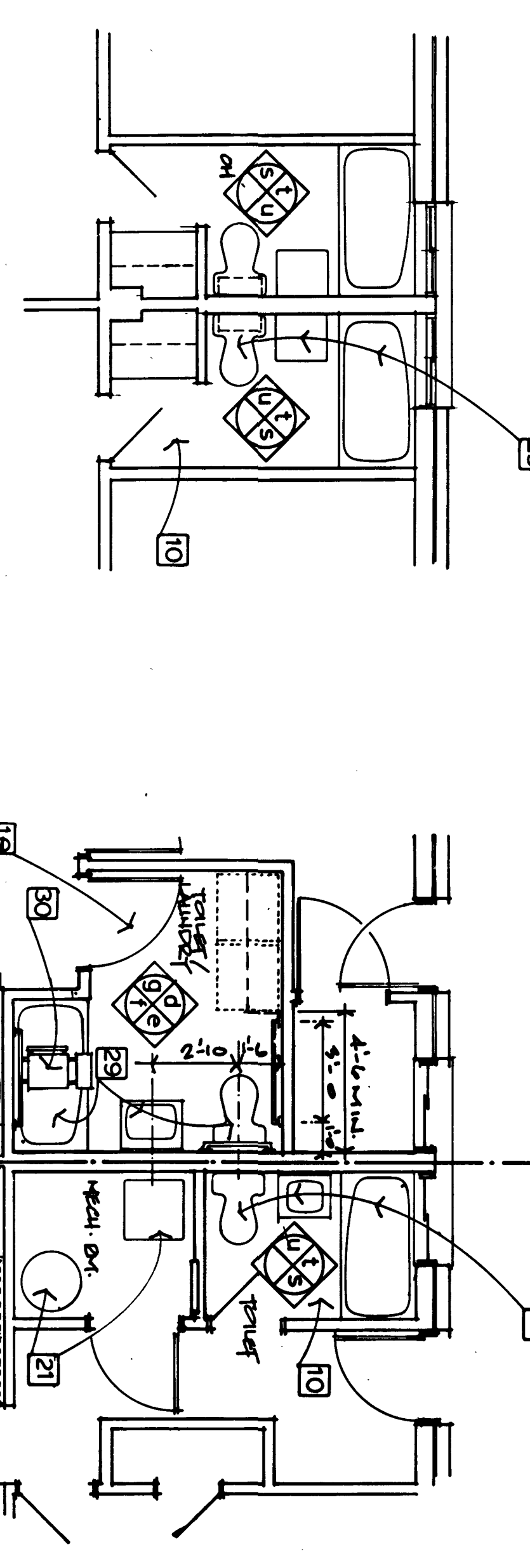


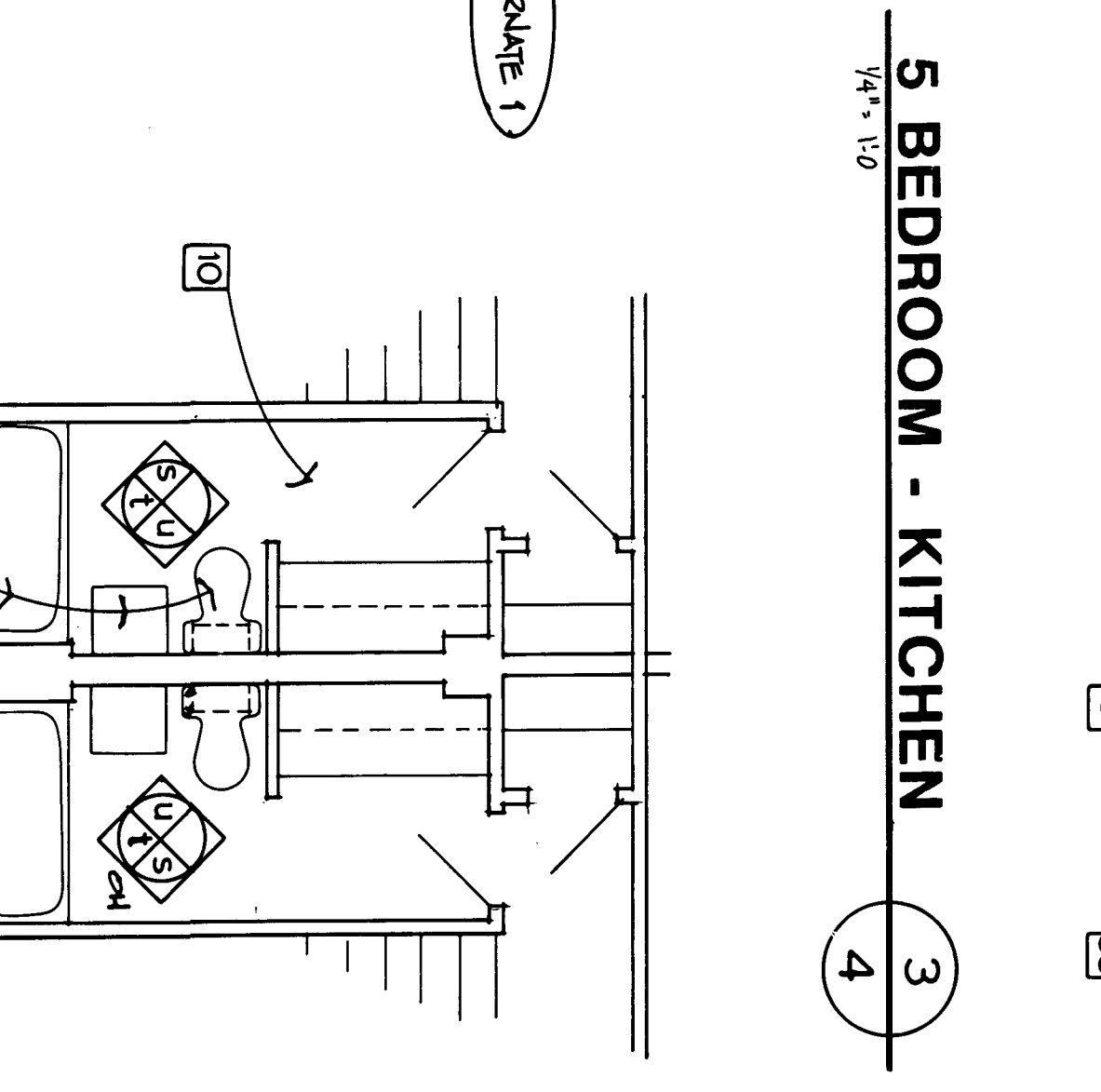
3 BEDROOM - KITCHEN
1/4" = 1'-0"



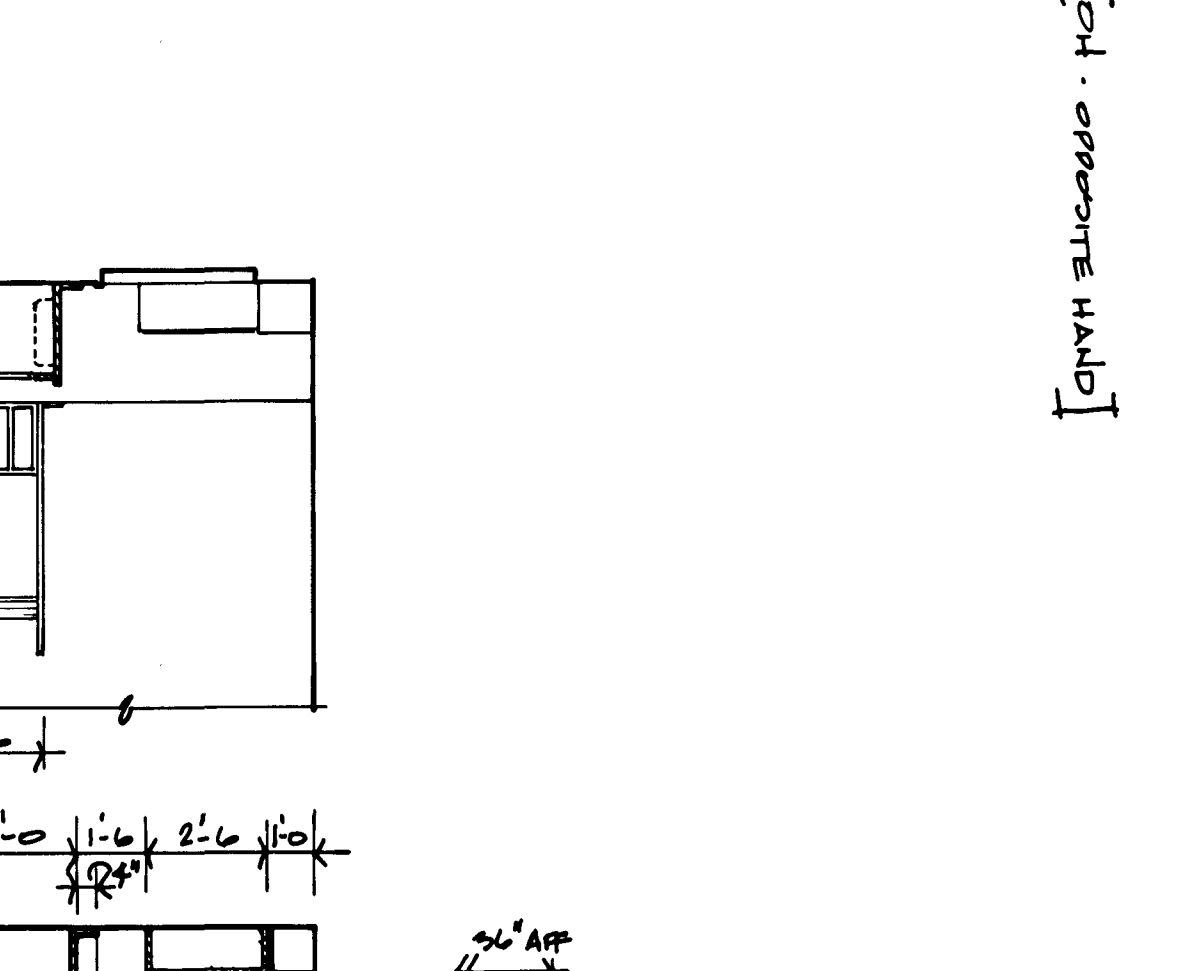
5 BEDROOM - KITCHEN
1/4" = 1'-0"



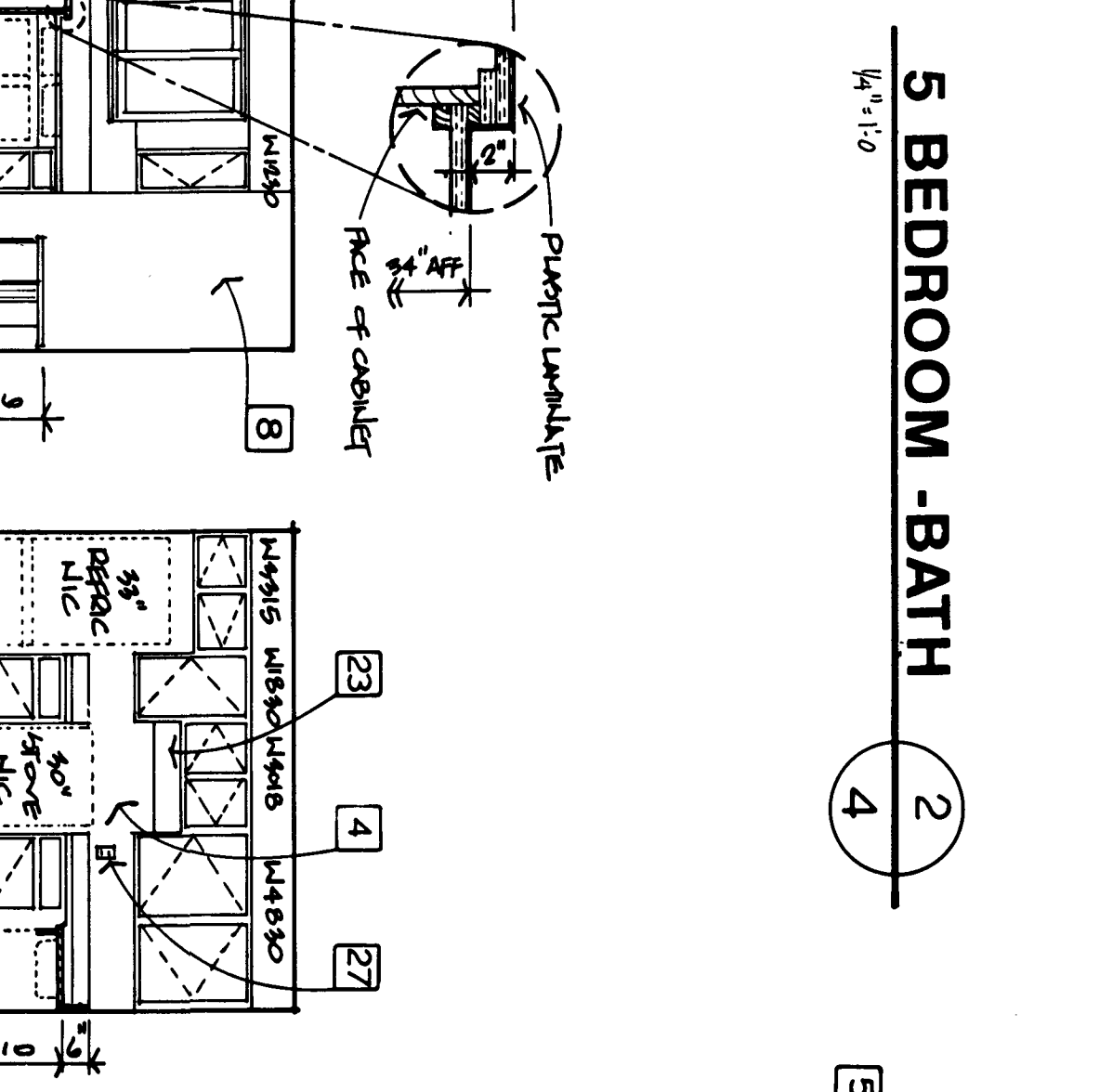
3 BEDROOM - BATH
1/4" = 1'-0"



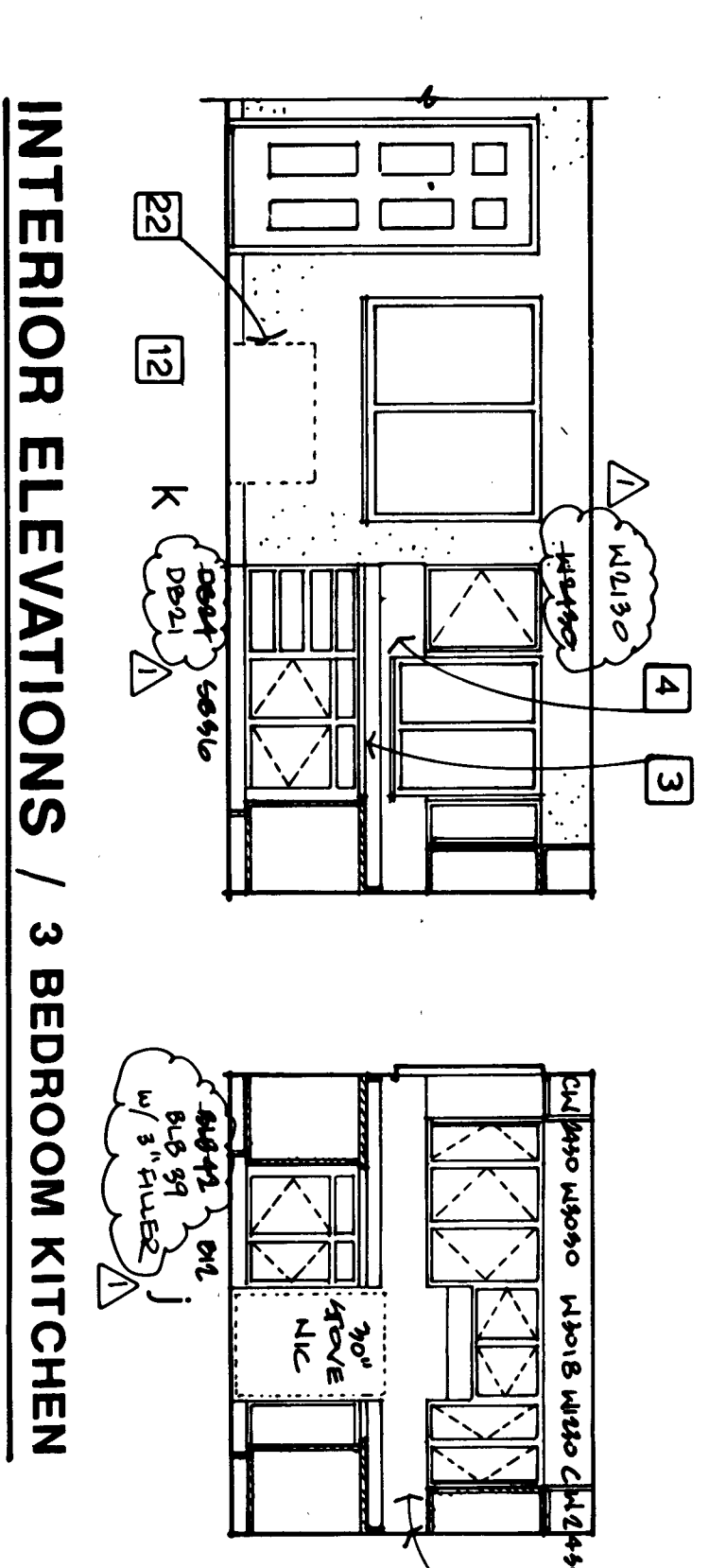
4 BEDROOM - KITCHEN
1/4" = 1'-0"



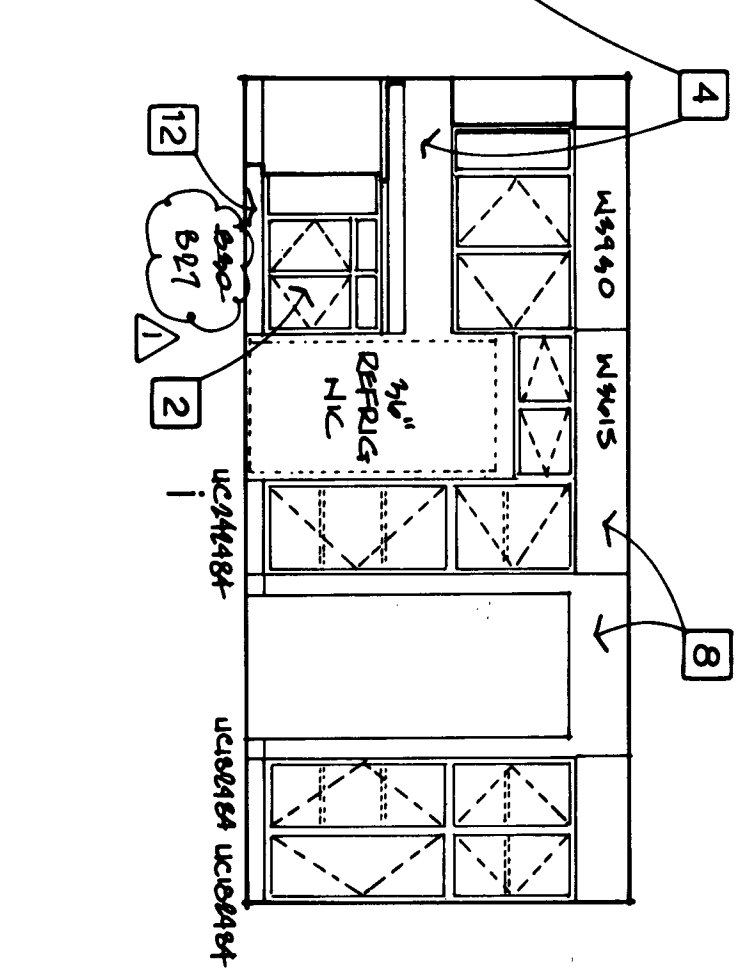
4 BEDROOM - BATH
1/4" = 1'-0"



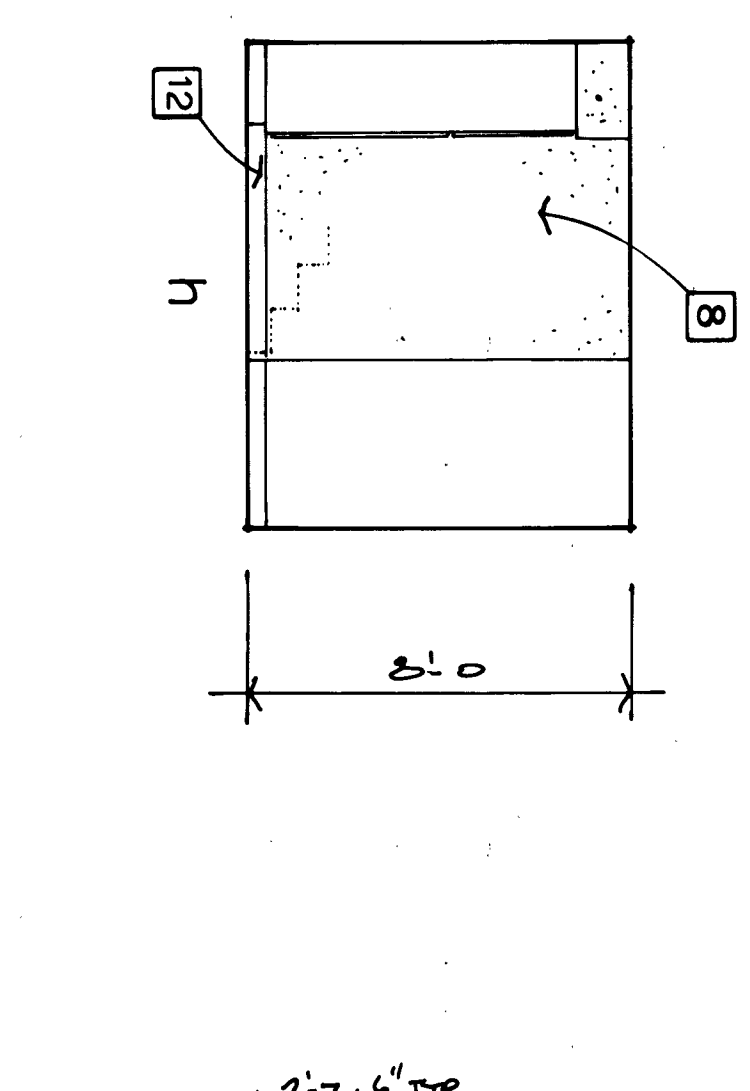
1 BEDROOM KITCHEN
1/4" = 1'-0"



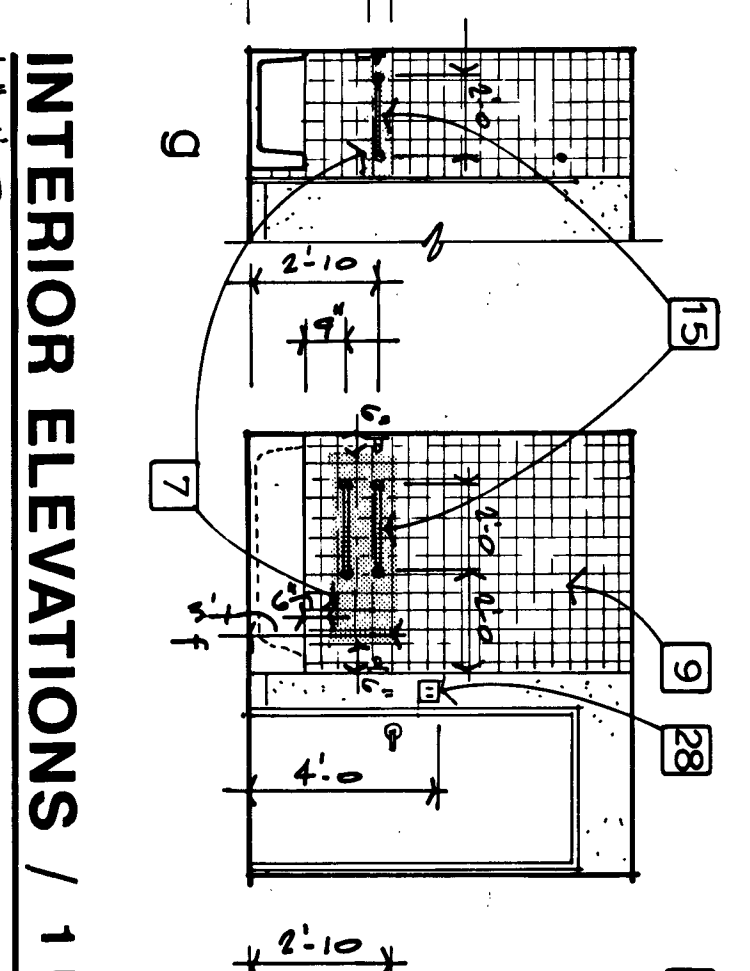
INTERIOR ELEVATIONS / 3 BEDROOM KITCHEN



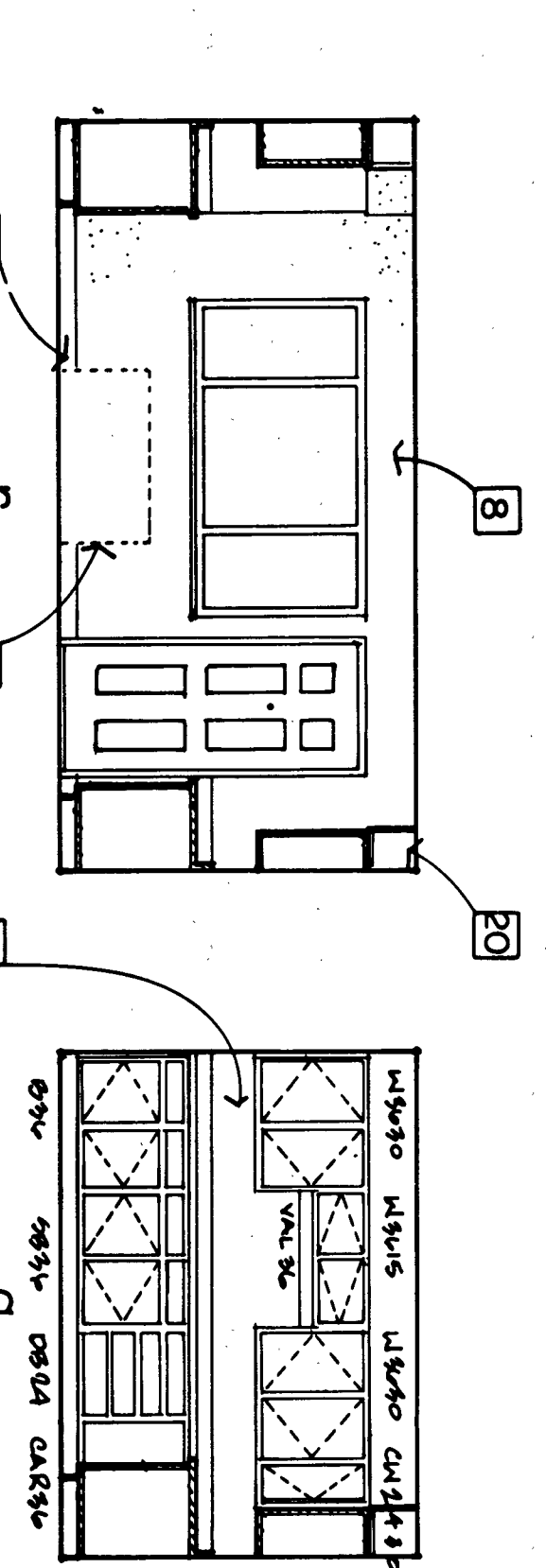
INTERIOR ELEVATIONS / 4 BEDROOM KITCHEN



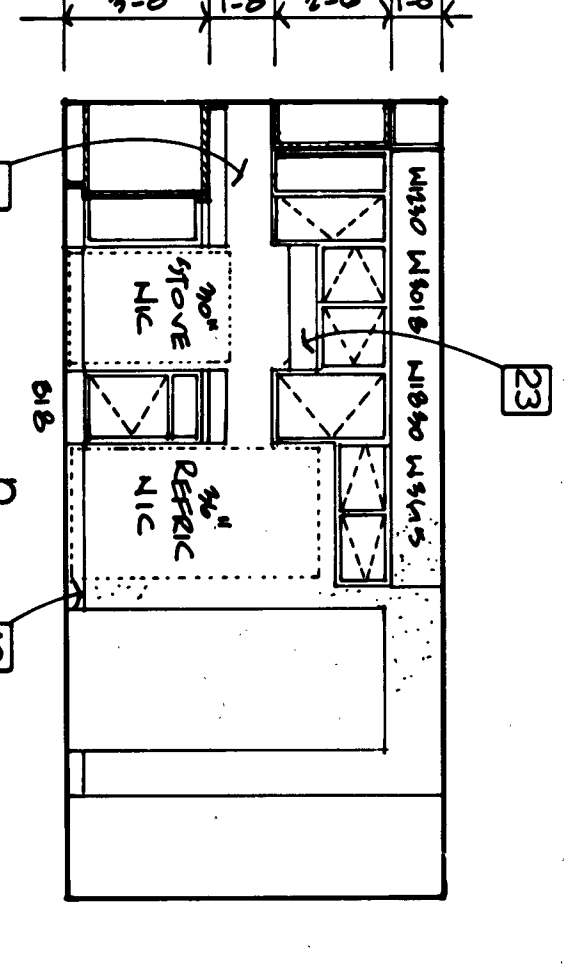
INTERIOR ELEVATIONS / 4 BEDROOM BATH



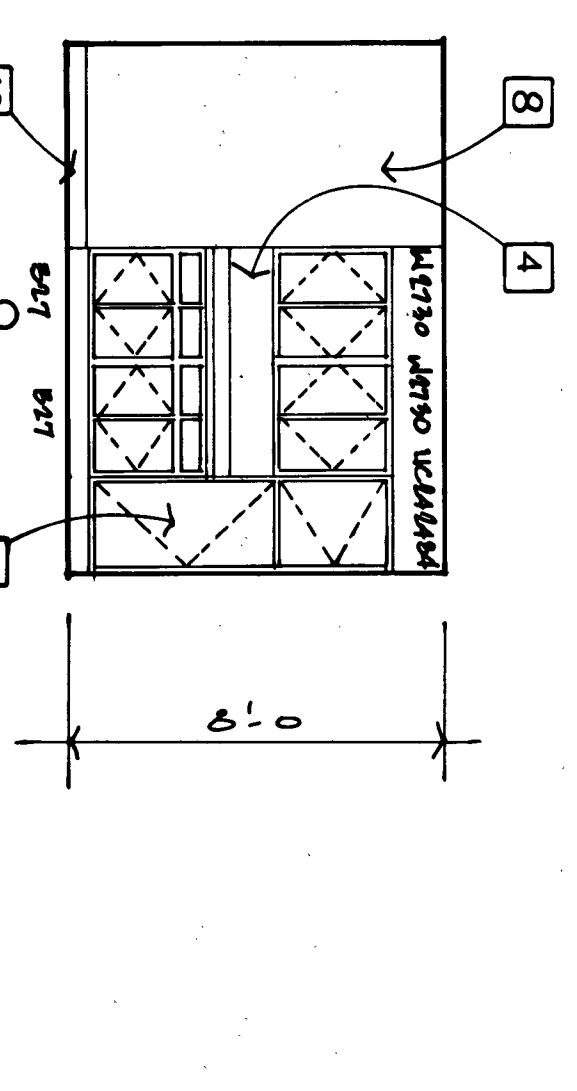
INTERIOR ELEVATIONS / 1 BEDROOM BATH



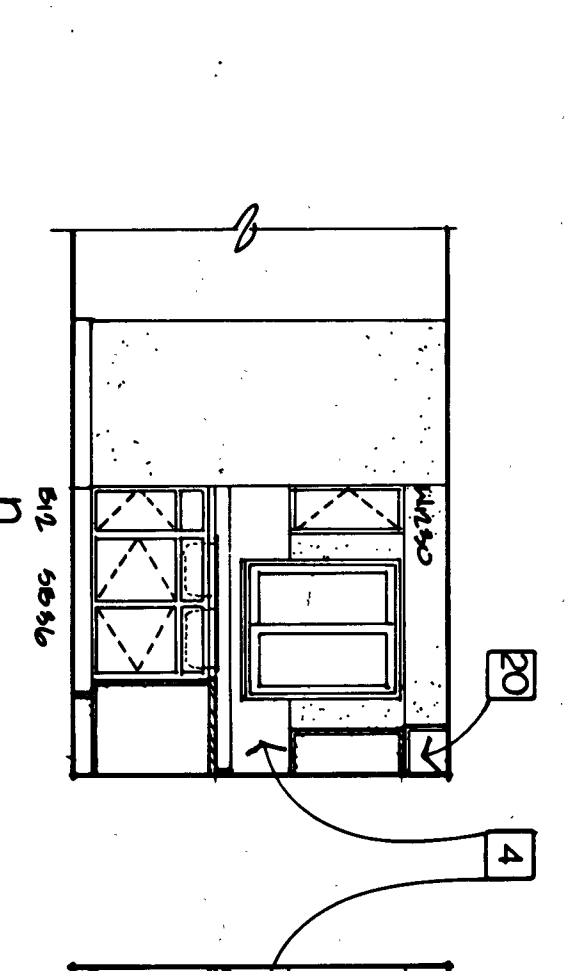
INTERIOR ELEVATIONS / 5 BEDROOM KITCHEN



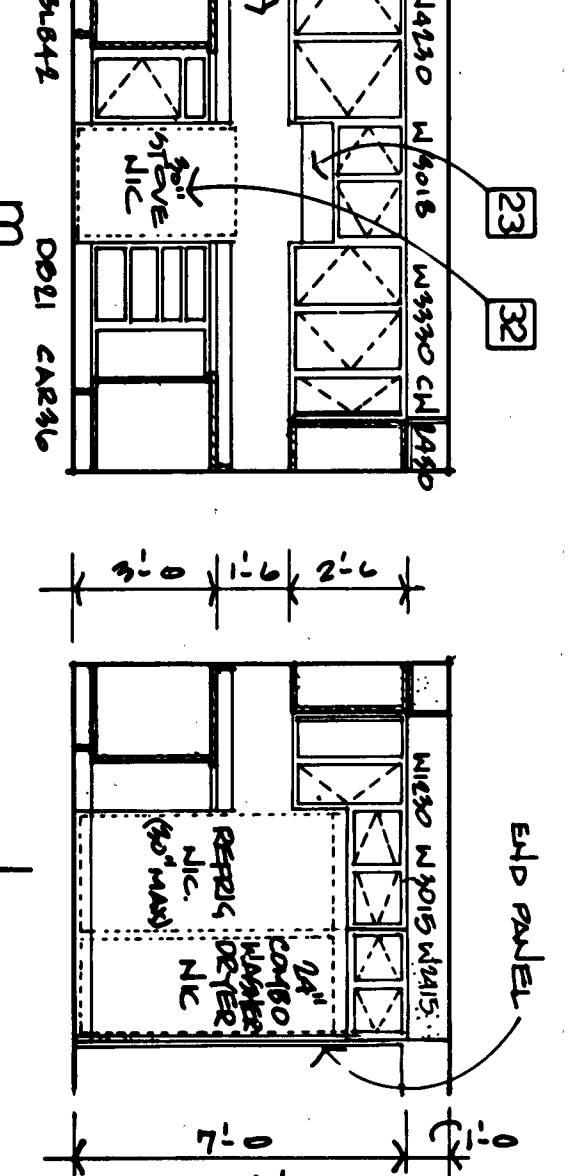
INTERIOR ELEVATIONS / 4 BEDROOM KITCHEN



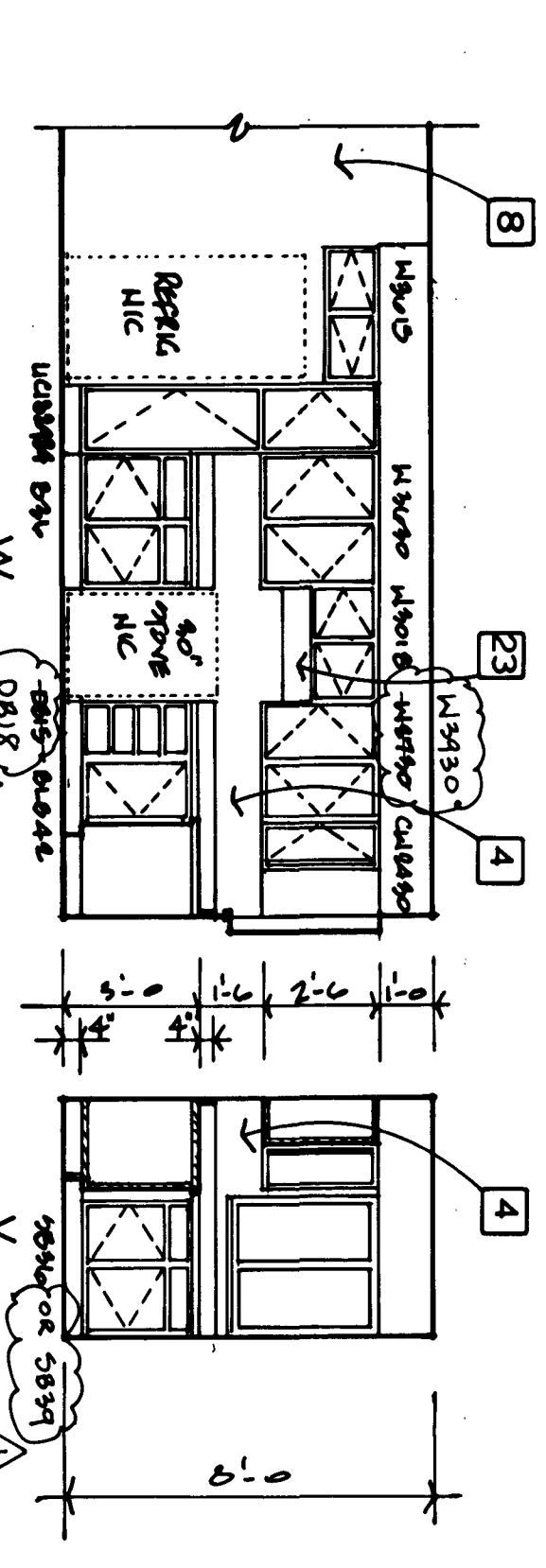
INTERIOR ELEVATIONS / 4 BEDROOM BATH



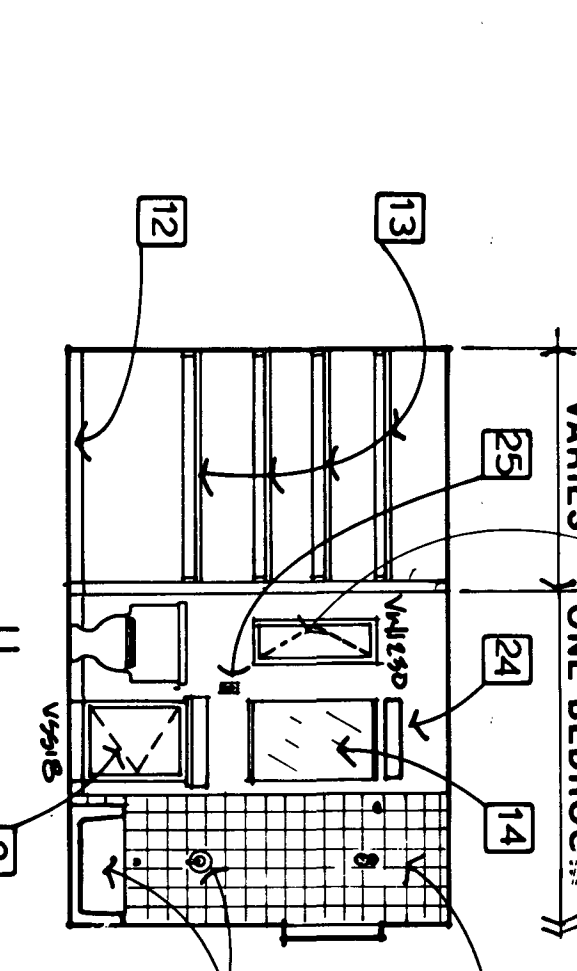
INTERIOR ELEVATIONS / 1 BEDROOM KITCHEN



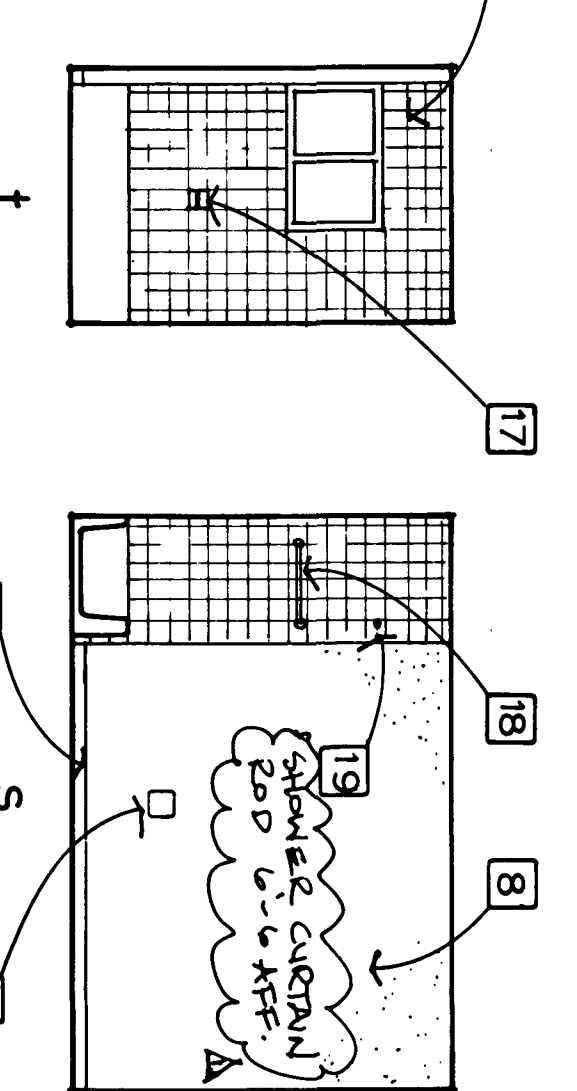
INTERIOR ELEVATIONS / 1 BEDROOM BATH



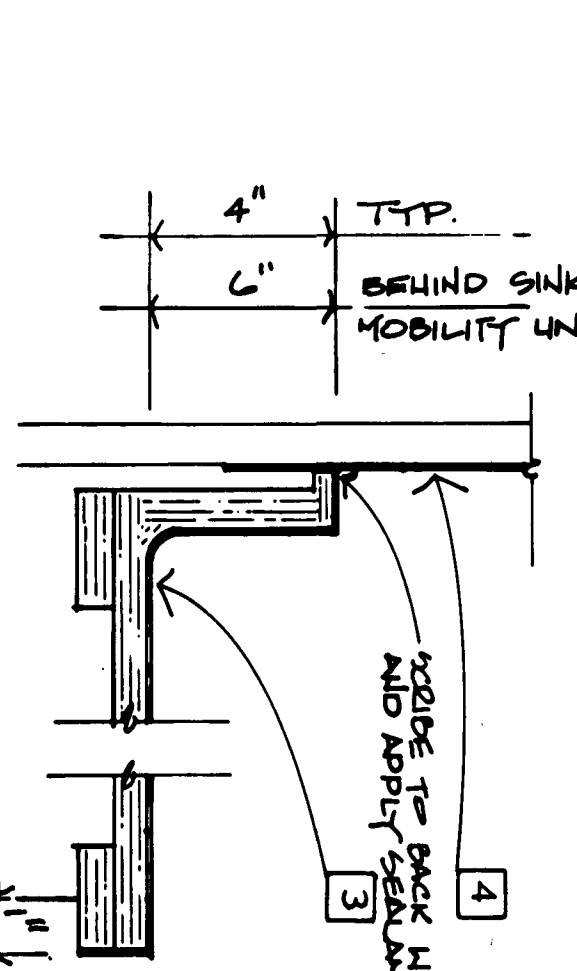
INTERIOR ELEVATIONS / 4 BEDROOM KITCHEN



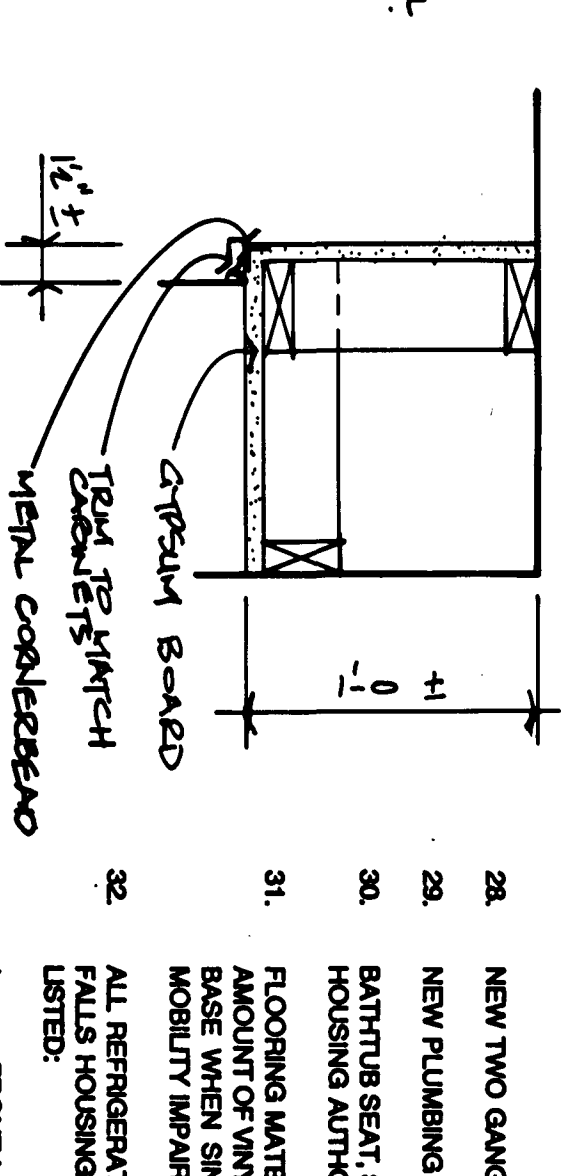
INTERIOR ELEVATIONS / 4 BEDROOM BATH



INTERIOR ELEVATIONS / 5 BEDROOM BATH



COUNTER DETAIL
1/8" = 1'-0"



SOFFIT DETAIL
1/8" = 1'-0"

- DRAWING NOTES**
- WORKLIGHT FROM PAINTING, PAINT, SEE ELEVATION/SECTION 108.
 - WOOD KITCHEN CABINETS, TYPICAL.
 - PLASTIC LAMINATED COUNTERTOP, SEAMLESS TOP SURFACE WITH 4" INTEGRAL CORNE BACKGUSH IN MOBILITY IMPAIRED OVER KITCHEN SINKS AS DETAIL ON DRAWING 6. SEE COUNTER DETAIL. SINK CUTOUTS BY GENERAL CONTRACTOR, COORDINATE WITH PLUMBING CONTRACTOR.
 - PLASTIC LAMINATED WALL ABOVE BASE CABINETS, COLOR TO MATCH COUNTERTOP.
 - 1 1/2" THICK PLASTIC LAMINATED PENINSULA OVER 3/4" PARTICLE SUBSTRATE.
 - TABLE SUPPORT, PAINTED 4" X 4" HARDWOOD BOX CONSTRUCTION WITH 4" W/VA BASE, SOLID WOOD PRESSURE TREATED BLOCKING, 2" NOMINAL THICKNESS, BEHIND GYPSUM BOARD AS NOTED ON DRAWINGS.
 - PANT, SEE SPECIFICATIONS FOR SCHEDULE.
 - 4 1/2" X 4 1/2" CERAMIC TILE OVER 3/4" WATER PROOF GYPSUM BOARD AROUND BATHS AS NOTED ON DRAWINGS. RUN OUT EXISTING WALL STUDS AS REQUIRED TO KEEP WALL BOARD FLUSH WITH THE EXISTING SURFACE. TYPICAL IN ALL BATHROOMS.
 - WANT SHEET FLOORING OVER 1/4" PLYWOOD UNDERLAYMENT, TYPICAL IN ALL KITCHENS AND BATHROOMS.
 - 12X 12X 1/2" W/VA COMPOSITION TILE OVER 1/4" PLYWOOD UNDERLAYMENT, TYPICAL IN ALL UNITS EXCEPT KITCHENS AND BATHS.
 - 4" HIGH W/VA CORNE BASE.
 - PANT EXISTING SHELVING AND SUPPORTS.
 - 1 1/4" X 3/4" X 1/4" HARBOR WITH GROUND EDGES, MECHANICALLY FASTENED, TYPICAL TOP AND BOTTOM.
 - 1 1/4" GRAB BARS, TYPICAL.
 - TILET PAPER HOLDER, REPLACE IN SAME LOCATION IN ALL EXISTING BATHROOMS AND AS NOTED IN ALL NEW BATHROOMS.
 - CERAMIC SOAP DISH, COLOR TO MATCH CERAMIC TILE.
 - TOWEL BAR, CERAMIC HOLDERS TO MATCH CERAMIC TILE.
 - SHOWER CURTAIN ROD.
 - ALL SHOWERS ARE TO BE NEW IN ALL KITCHENS, SEE SOFFIT DETAIL. 3/4"
 - RELOCATE OR EXISTING HOT WATER TANK AND BOILER, SEE MECHANICAL AND HEATER COVERS AND BACK-PLATES TO BE REINSTALLED AFTER FINISH PAINTING, TYPICAL ALL UNITS.
 - 3/8" DUCTLESS RANGE HOOD, TYPICAL ALL UNITS. SEE ELECTRICAL DRAWINGS FOR WIRING DETAILS.
 - REPLACE EXISTING LIGHTING FIXTURE OVER W/VA.
 - EXISTING GFCI OUTLET.
 - NEW GFCI OUTLET.
 - NEW SWITCHES TO OPERATE RANGE HOOD FAN AND LIGHT, TYPICAL IN ALL MOBILITY IMPAIRED UNITS ONLY.
 - NEW LIGHTING FIXTURES AND CONTROLS, SEE PLUMBING DRAWINGS.
 - NEW PLUMBING FIXTURES AND CONTROLS, SEE PLUMBING DRAWINGS.
 - BATHS SEAT, SUPPLIED BY GENERAL CONTRACTOR AND DELIVERED TO NAGARA FALLS HOUSING AUTHORITY.
 - FLOORING MATERIAL TO BE INSTALLED UNDER SINK FRONT CABINET (SINK, SUFFICIENT ROOM FOR SINK FRONT CABINET IS PROVIDED TO MAKE SINK ACCESSIBLE FOR THE MOBILITY IMPAIRED).
 - ALL REFRIGERATORS, STOVES, WASHERS AND DRYERS ARE SUPPLIED BY THE NAGARA FALLS HOUSING AUTHORITY.
 - 3/4" W/VA CROWN MOULDING TO BE INSTALLED OVER ALL MOBILITY IMPAIRED UNITS.
 - SELF-CLEANING OVEN/STOVE WITH CONTROLS LOCATED ON FRONT PANEL.
 - VENT STACK LOCATION, COMPARTMENT BASE, AND WALL CHIMNEY ARE TO BE MOVED AROUND OBSTRUCTION, FIELD VENT LOCATION AND DIMENSIONS IN ALL UNITS.