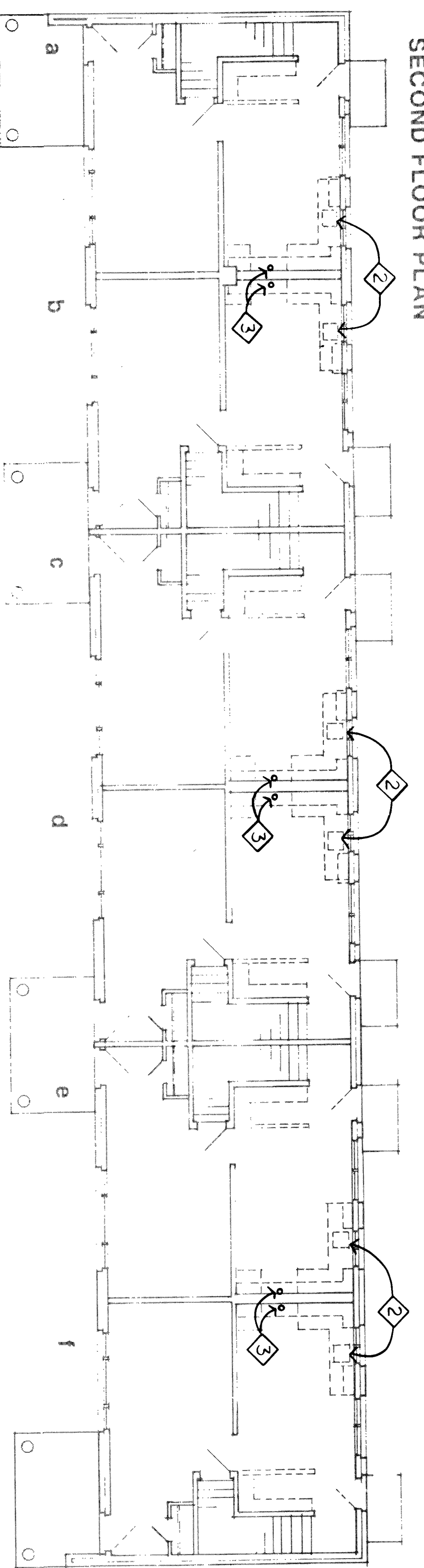
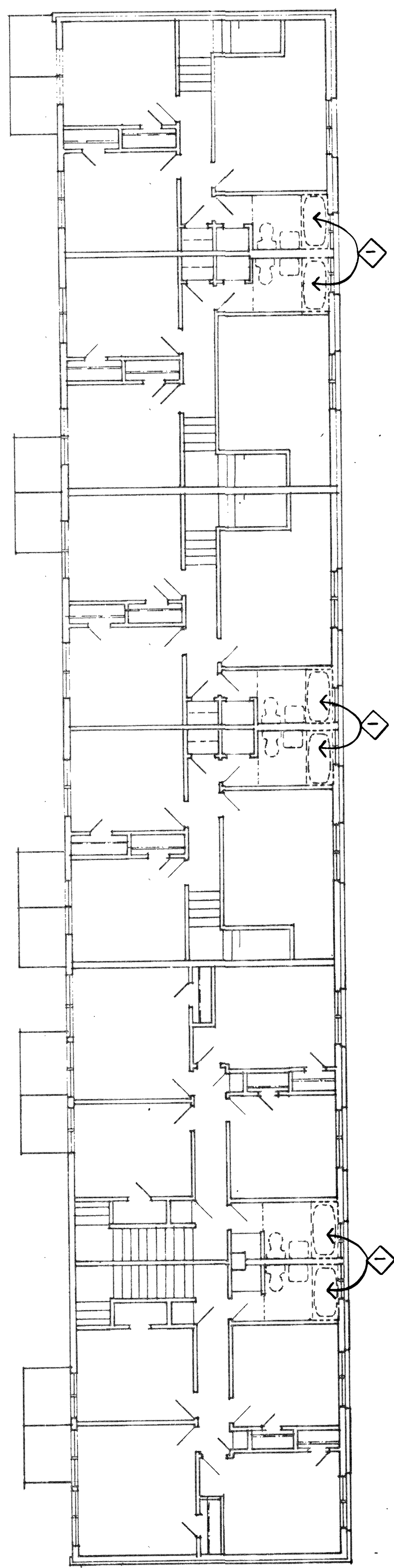


SECOND FLOOR PLAN

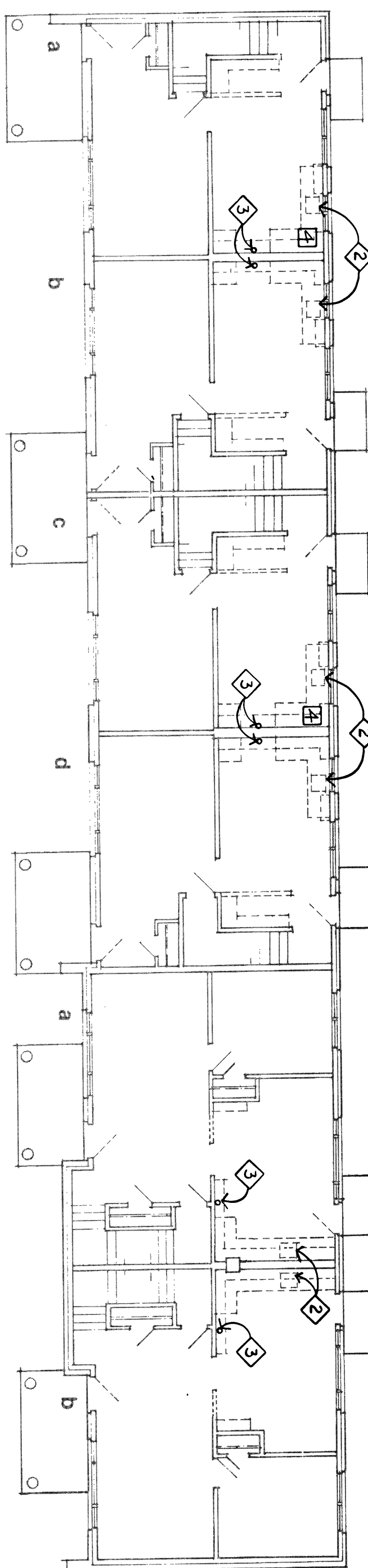


FIRST FLOOR PLAN

6-3 BEDROOMS
BUILDING NOS. 9, 22

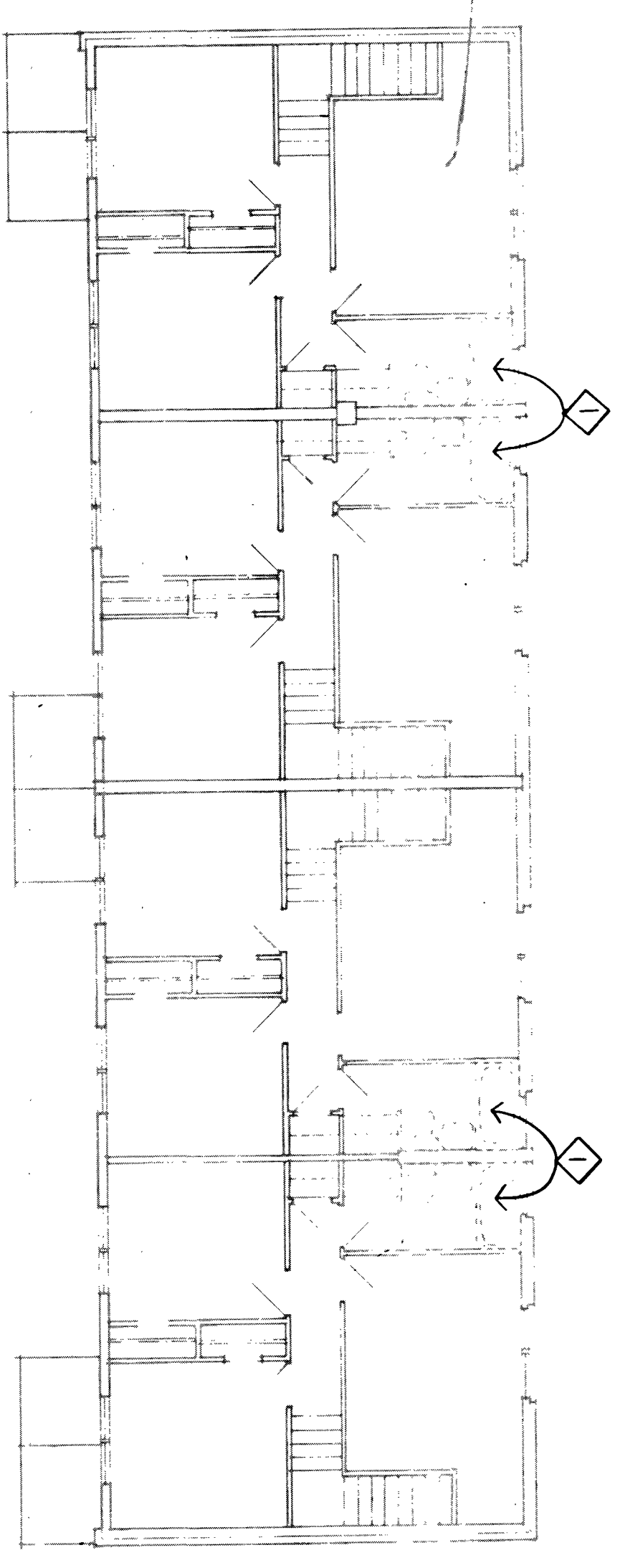


SECOND FLOOR PLAN

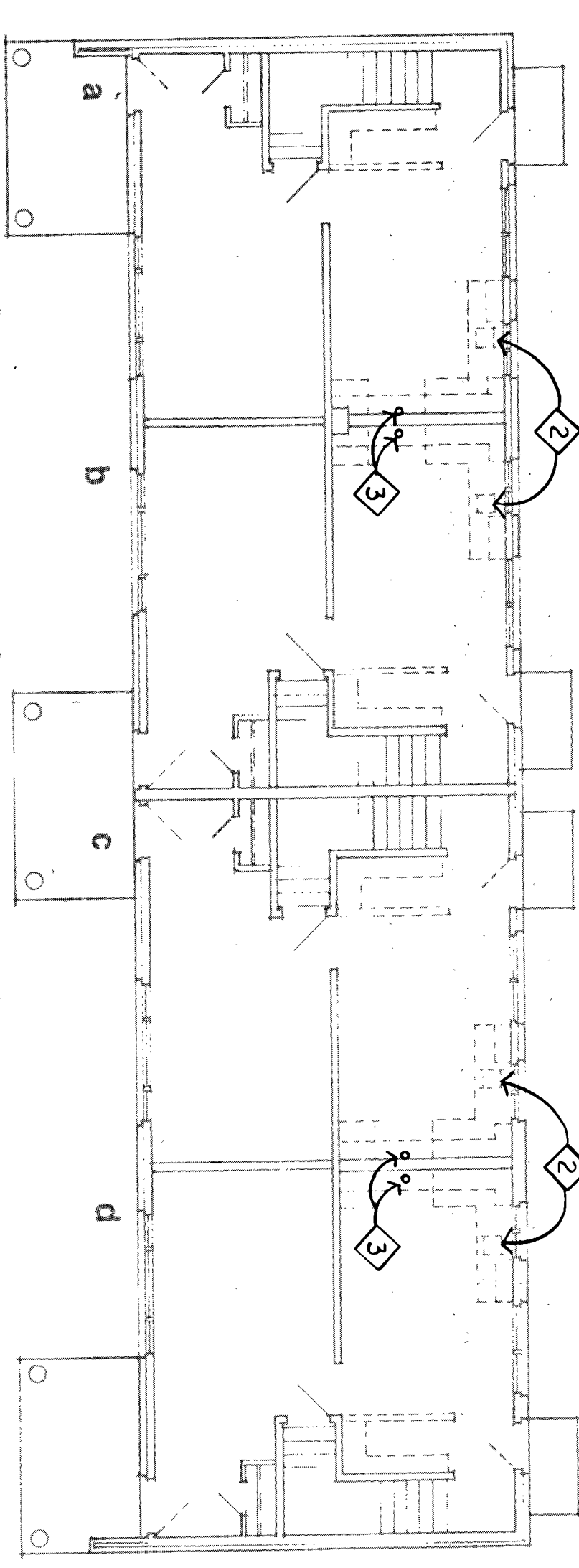


FIRST FLOOR PLAN

4-3 BEDROOMS / 2-5 BEDROOMS
BUILDING NOS. 10, 11

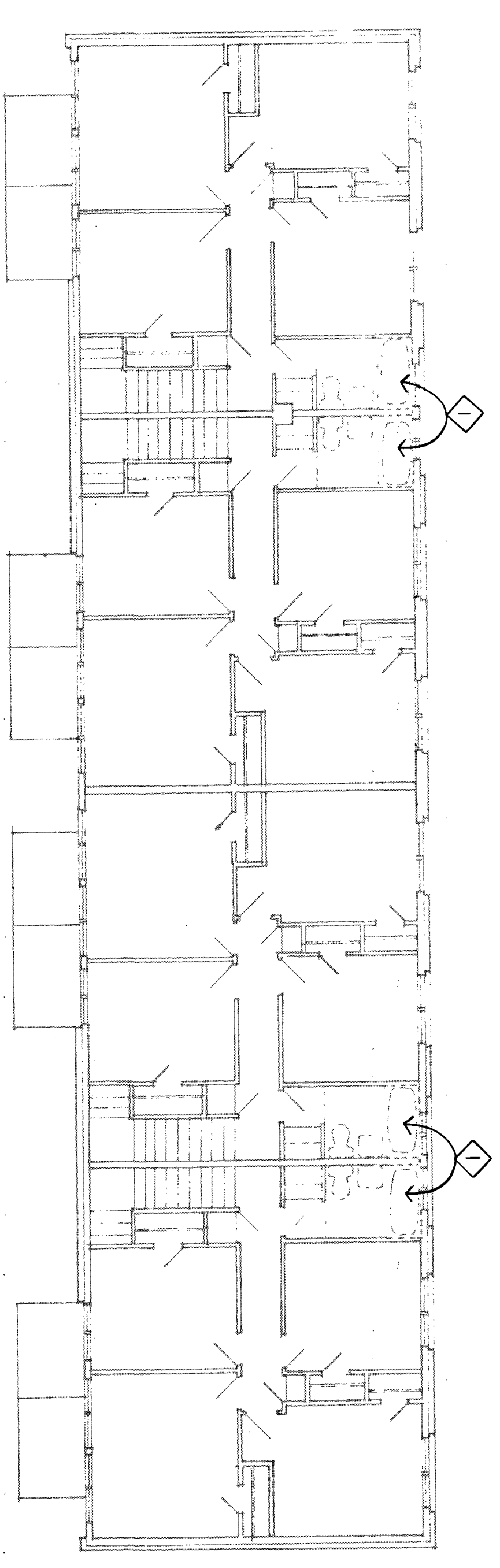


SECOND FLOOR PLAN

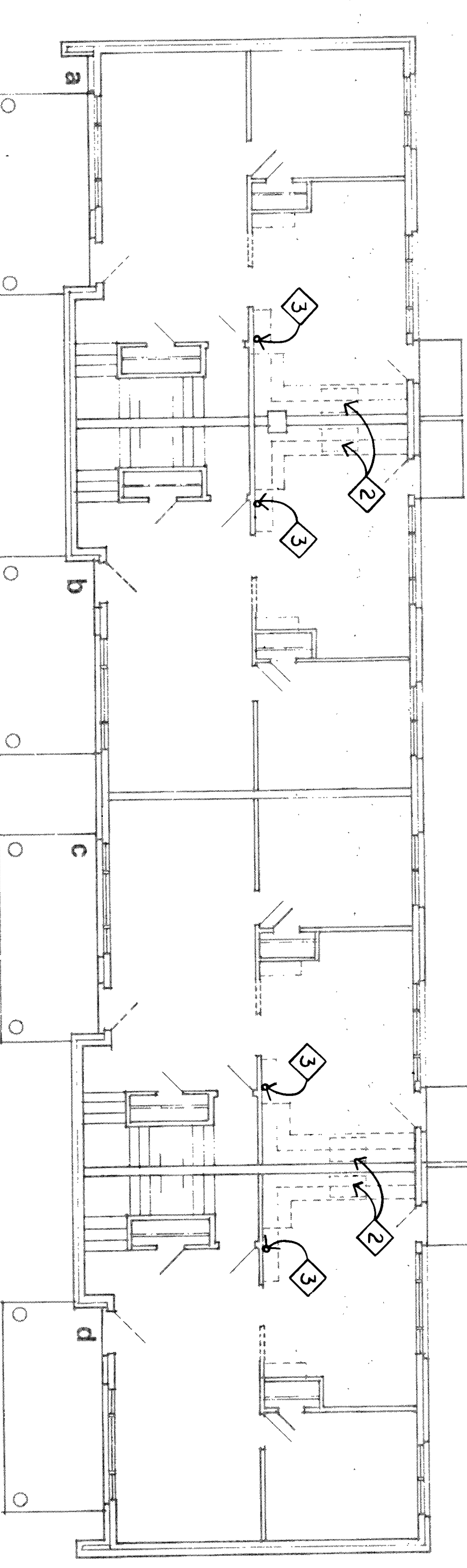


FIRST FLOOR PLAN

4-3 BEDROOMS
BUILDING NOS. 1, 2, 3, 4, 5, 6, 7, 8, 19



SECOND FLOOR PLAN

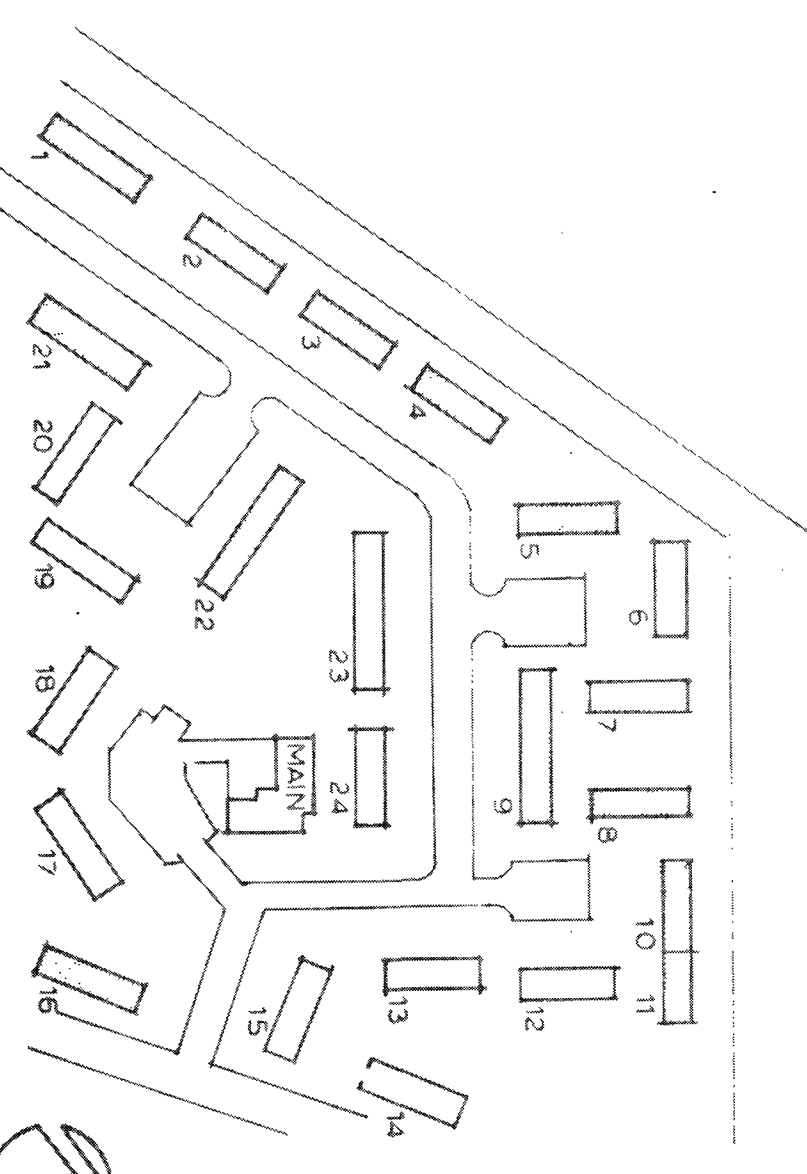


FIRST FLOOR PLAN

4-5 BEDROOMS
BUILDING NO. 21

- PLUMBING DRAWING NOTES**
1. DISCONNECT EXISTING PIPING FROM FIXTURES TO BE REMOVED BY THE GENERAL CONTRACTOR.
 2. PRIOR TO DEMOLITION WORK, REMOVE EXISTING FACETS. FACETS TO BE REINSTALLED LATER WITH NEW SINKS. STORE FACETS IN A SAFE LOCATION. DISCONNECT EXISTING PIPING FROM SINKS TO BE REMOVED BY THE GENERAL CONTRACTOR.
 3. DISCONNECT EXISTING GAS APPLIANCE CONNECTOR FROM STOVES TO BE REMOVED BY THE GENERAL CONTRACTOR.
 4. ADD CLEANOUTS IN KITCHEN SINKS FOR 1/2" BATH TUB CO. & 2" UNITS DOCUMENTED BY NYPAD AT GRID 4' W.

- GENERAL NOTES**
- A. VERIFY EXISTING CONDITIONS BEFORE STARTING NEW WORK.
 - B. EXISTING AND NEW PIPING ARE SHOWN IN APPROXIMATE LOCATIONS. ADJUST NEW PIPING AS REQUIRED TO SUIT FIELD CONDITIONS.
 - C. COORDINATE WORK WITH OTHER TRADES TO AVOID ANY INTERFERENCES IN THE FIELD.
 - D. SHUT OFF WATER AND GAS SERVICES TO APARTMENTS. DRAIN WATER PIPING AND PURGE GAS PIPING SYSTEMS BEFORE STARTING WORK. NOTIFY OWNER PRIOR TO SHUTDOWN OF SERVICES.
 - E. CUTTING AND PATCHING OF WALLS AND CEILINGS FOR NEW WORK TO BE PERFORMED BY THE GENERAL CONTRACTOR. COORDINATE IN FIELD.
 - F. COVER PIPE OPENINGS AFTER REMOVAL OF FIXTURES TO PREVENT THE ENTRY OF DEBRIS IN THE PRESS.
 - G. REFER TO ARCHITECTURAL DRAWINGS FOR ADDITIONAL INFORMATION.



WARNING: ATTENTION TO THIS DOCUMENT NOT CONFORMING TO SECTION 2302.2 OF SEASIDE STATE EDUCATION LAW AND REGULATIONS. NOT PUBLISHED. ALL RIGHTS RESERVED.

DATE	BY	REVISIONS
11 APR 94	44-45	QUICKS

JORDAN GARDENS - CIAP
NIAGARA FALLS HOUSING AUTHORITY
HIGHLAND AVE. AT EASTON DR.
NIAGARA FALLS, NEW YORK

NY 11-2

Trautman King Hardware Associates, Inc. Architects and Engineers
430 West 34th Street, New York, NY 10001 (212) 850-4000

TRAUTMAN ASSOCIATES
MECHANICAL / PLUMBING
DEMOLITION FLOOR PLANS

92025
T/B-31-0
16 NOV 92
M 1

