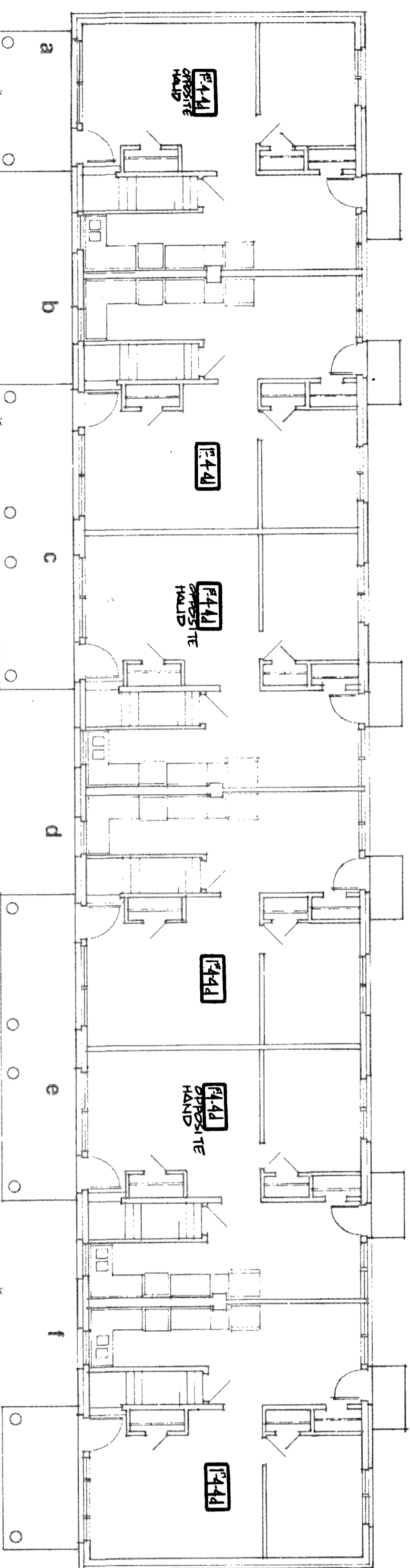
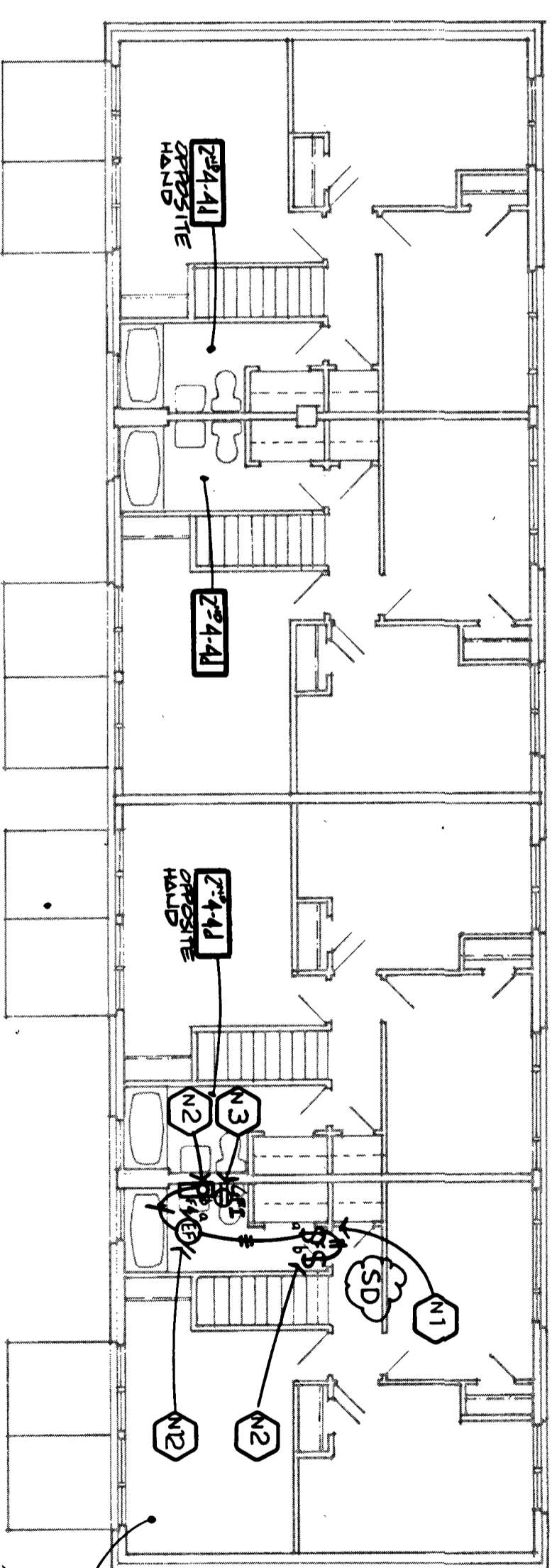


SECOND FLOOR PLAN

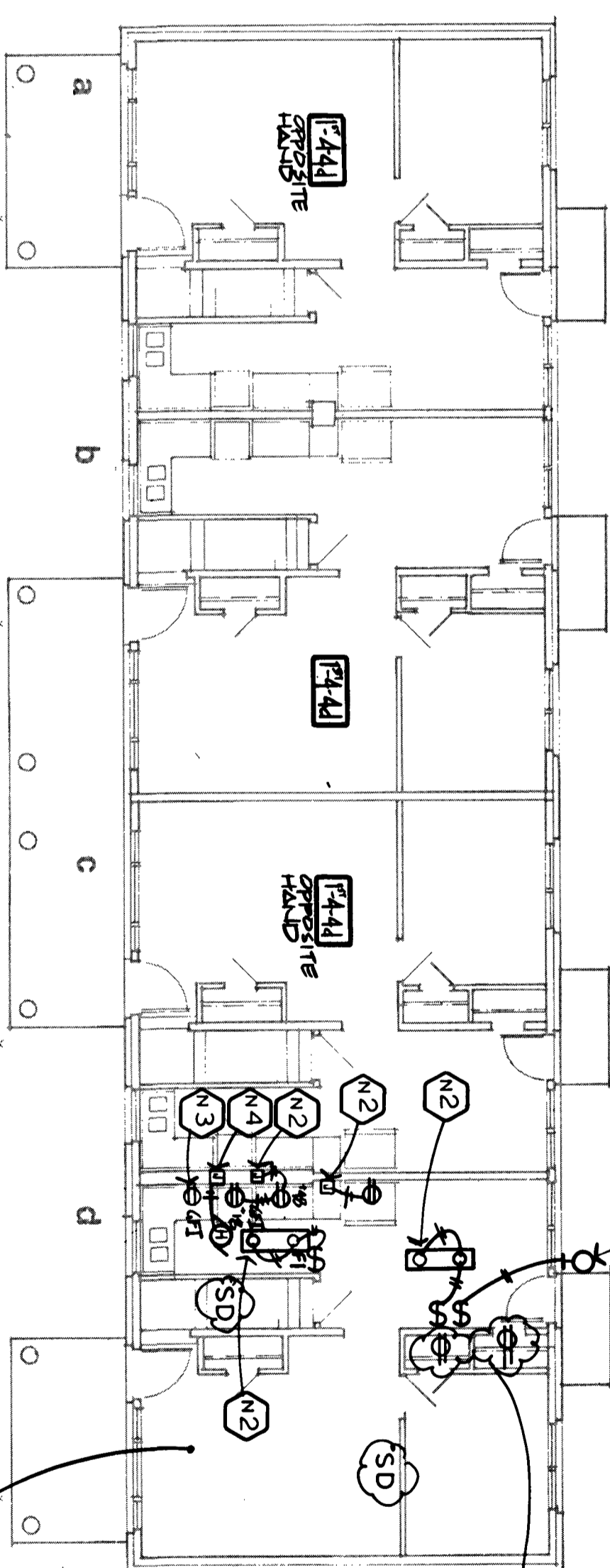


FIRST FLOOR PLAN

6-4 BEDROOMS
BUILDING NO. 23

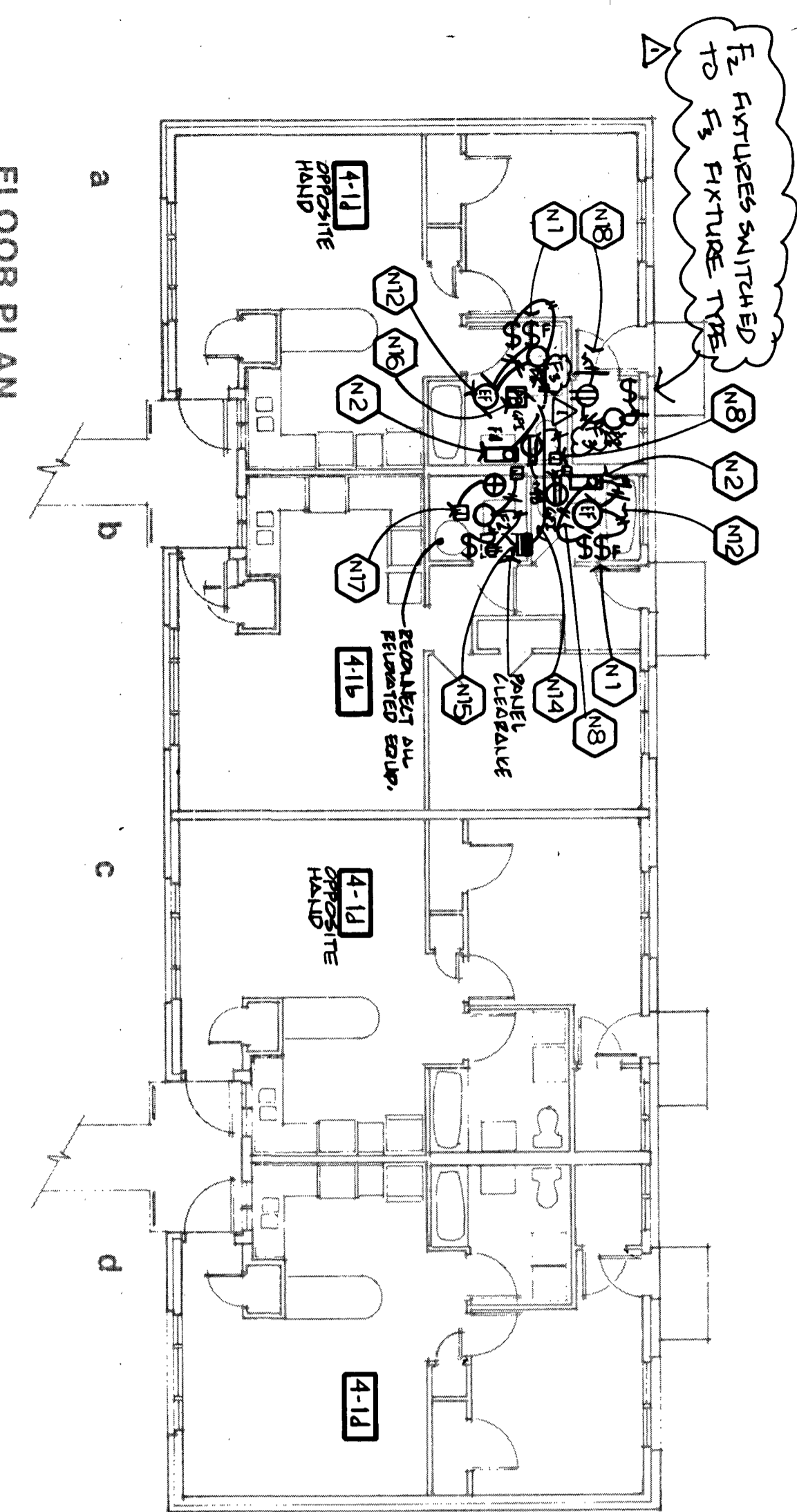


SECOND FLOOR PLAN



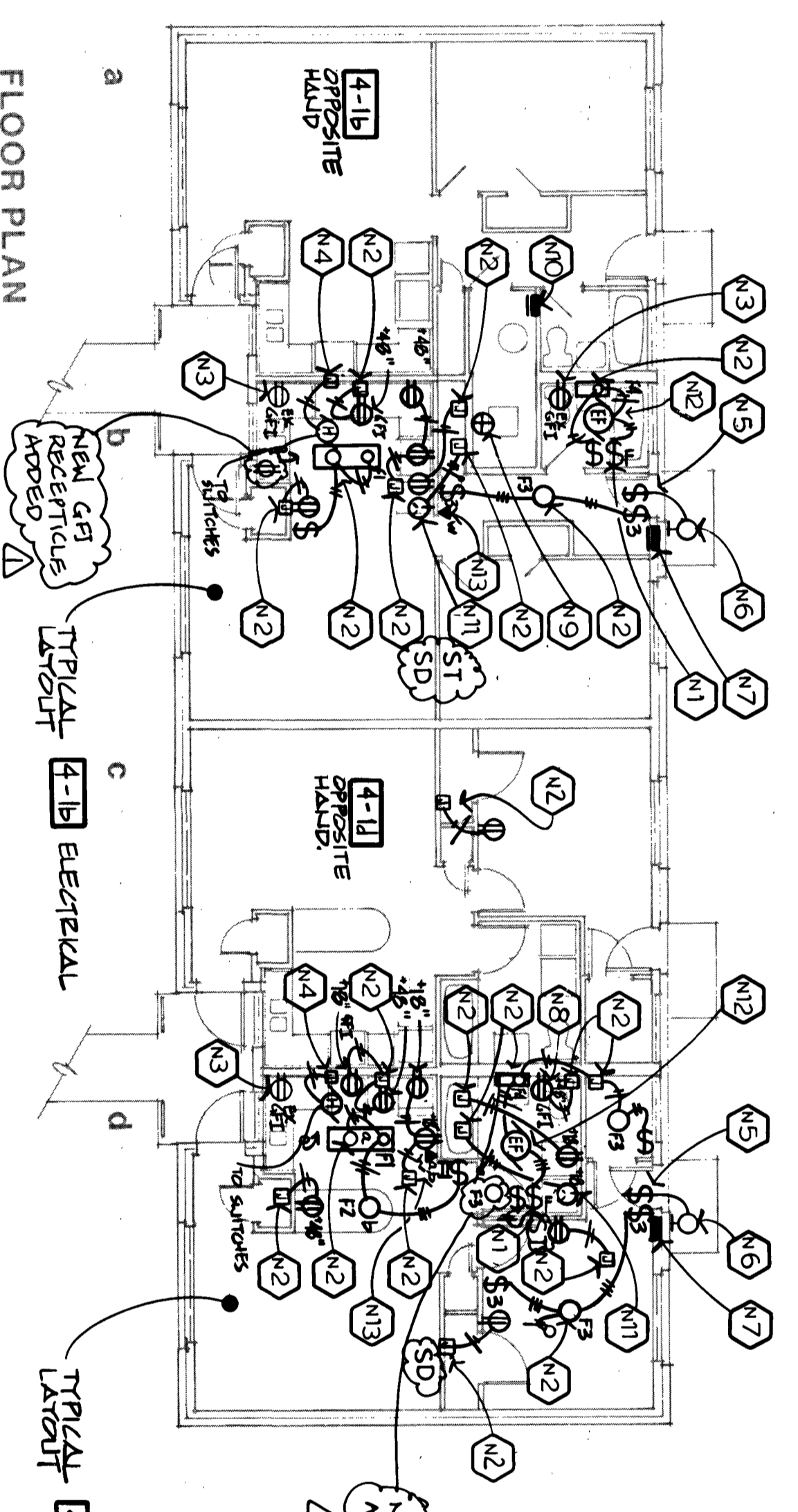
FIRST FLOOR PLAN

4-4 BEDROOMS
BUILDING NOS. 14, 15, 16, 17, 18, 20, 24



FLOOR PLAN

4-1 BEDROOMS
BUILDING NO. 12



FLOOR PLAN

4-1 BEDROOMS
BUILDING NO. 13

SD - NEW SMOKE DETECTOR
ST - NEW SMOKE LIGHT OPERATED
FROM SMOKE DETECTOR.
(SEE CODE ITEM 1.1)

NEW WORK DRAWING
NOTES

1. INSTALL NEW FAN SWITCH (FURNISHED BY DW. 19) AND WIRE COMPLETE TO EXHAUST FAN.
2. EXTEND EXISTING BRANCH CIRCUIT WIRING TO NEW DEVICES. INSTALL JUNCTION BOX TO FACILITATE EXTENSION WIRING. INSTALL ALL EXTENSION WIRING IN SUCH A MANNER THAT CONTINUITY OF EXISTING BRANCH CIRCUIT WIRING INSTALLED TO AREAS NOT AFFECTED BY THIS RENOVATION IS MAINTAINED.
3. INSTALL NEW COVER PLATE ON EXISTING DEVICE.
4. EXISTING BRANCH CIRCUIT WIRING TO NEW EXHAUST FAN. PROVIDE 2 SEPARATE, ULUL EXTENDED SPLICED AND DEEP PULL BOX WITH HINGED COVER. PROVIDE ALL BRANCH CIRCUIT WIRING IN SIMILAR CONFIGURATION TO EXISTING CONDITION. PROVIDE MAINTAIN BRANCH CIRCUIT WIRING TO EXISTING EXTERIOR LIGHT FIXTURE. INSTALL NEW LIGHT SWITCH.
5. EXISTING APARTMENT LOAD CENTER TO BE MAINTAINED.
6. INSTALL EXISTING DEVICE IN NEW LOCATION. EXTEND BRANCH CIRCUIT WIRING TO NEW DEVICE AND INSTALL NEW COVER PLATE.
7. MAINTAIN CONTINUITY OF BRANCH CIRCUIT WIRING TO BOILER CONTROLS.
8. EXISTING MECHANICAL ROOM PANELBOARD TO BE MAINTAINED.
9. FURNISH AND COMPLETE ELECTRICAL CONNECTION TO COMBINATION WASHER AND DRYER (SUPPLIED BY OWNER). EXTEND BRANCH CIRCUIT WIRING AND INSTALL OUTLET AS DIRECTED BY MANUFACTURER.
10. INSTALL NEW EXHAUST FAN AND WIRE COMPLETE. E.G. TO PROVIDE CEILING PENETRATION.
11. INSTALL NEW MODULAR TELEPHONE JACK AND WIRING BACK CONCEALED BACK TO PUNCH BLOCK LOCATED IN BASEMENT.
12. EXTEND ALL EXISTING BRANCH CIRCUITS TO NEW PANEL LOCATION.
13. LOCATION FOR RELOCATED LOAD CENTER. (WALL & WIRE 24" HIGHER).
14. FURNISH AND INSTALL NEW 1'6" X 1'6" X 8" DEEP PULL BOX WITH HINGED COVER. SPlice ALL CONDUCTORS FROM EXISTING LOAD CENTER FOR EXTENSION TO RELOCATED LOAD CENTER.
15. EXTEND WIRING FROM EXISTING BOILER CONTROLS TO NEW LOCATION.
16. CONNECT TO EXISTING BRANCH CIRCUIT WIRING.

EXCEPT PER APPENDIX I
SEE DRAWING C

TYPICAL [E-41] ELECTRICAL

TYPICAL [E-41] ELECTRICAL

WARNING: ATTENTION TO THIS DOCUMENT
NOT FOR CONSTRUCTION. THIS DOCUMENT
IS FOR INFORMATION ONLY. ANY REVISIONS
SHOULD BE NOTED ON THE REVISION SHEET.
NOT PUBLISHED. ALL RIGHTS RESERVED.

DAL	ERS	FRT	RMG
CS	CS	CS	CS
CS	CS	CS	CS
CS	CS	CS	CS

PERSONS
19 APRIL 94 - 45 BUILTS

JORDAN GARDENS - CIAP
NIAGARA FALLS HOUSING AUTHORITY
NIAGARA FALLS, NEW YORK

NY 11-2

Truttman Reg. Architectural Associates, Inc.
20 Franklin Street, Buffalo, NY 14202 (716) 835-5500

TRAUTTMAN ASSOCIATES
ELECTRICAL

93025
118-11-0
16 NOV 92
ES

